


Exhibition Poultry®

The #1 Internet Source For Information On Showing & Breeding Exhibition Poultry

Volume 4, Number 3 • <http://www.ExhibitionPoultry.net> • March 2013

A large black Cochin Pullet is the central focus of the image. It has very dark, almost black feathers with a prominent, ruffled tail. Its head is turned slightly to the left, showing a bright red comb and wattle. The bird is standing in a wire cage, with the metal bars visible in the background. The floor of the cage is covered with a layer of light-colored wood shavings or bedding.

In this issue . . . Rison, Arkansas Show Results
• APA News • ABA News • Outcrossing to
Create New Varieties Of Existing Breeds *by*
Brian Reeder • The Appenzeller Spitzhauben
• 2013 ABA Election Results • Jersey Giant
Club News • Poultry Breed Clubs Listing • APA
& ABA Judges List • Upcoming Shows, and
more. . . .

A Black Cochin Pullet exhibited by Drexel Jordan of Little Rock, Arkansas was the Champion Asiatic at the Backwoods Benefit Poultry Show In Rison, Arkansas on March 3rd, 2013. . . *Photo by Ann Charles*

Exhibition Poultry Magazine®

Table of Contents

Jersey Giant Club News	02
APA News	03
ABA Happenings.	04
Rison, Arkansas Show Results . .	06
Outcrossing To Create New Varieties by Brian Reeder	10
Poultry Breed Clubs	12
The Appenzeller Spitzhauben . . .	12
2013 ABA Election Results	12
APA/ABA Judges List	13
Upcoming APA/ABA Shows	14
Display Ad Rates	15

Advertiser's Index

American Poultry Association . .	03
American Bantam Association .	04
Cackle Hatchery	04
Natl. Call Breeders of America. .	04
SkyBlueEgg Araucana	05
Jason Mayeux Cochins	07
Brian Reeder	10
Magnolia Classic Show	13
El Dorado Poultry Show	14
Smith Poultry Supplies	14
Central Louisiana Poultry Club .	14
Exhibition Poultry Magazine . .	15

On The Cover . . .

A Black Cochon Pullet exhibited by Drexel Jordan of Little Rock, Arkansas, was the Champion Asiatic at the Backwoods Benefit Poultry Show In Rison, Arkansas on March 3rd, 2013. . . Cover Photo by Ann Charles



Exhibition Poultry Magazine® Advertising Rates and Deadline

Ad Deadline is the 24th of each month.

Please include an email address if you would like a proof of your ad before publication.

Columns are 2 3/8' wide.
This is the size of a \$6.25 1
column inch display ad.

Display Ads

Display ads are \$6.25 per column inch. Please include an email address if you would like a proof of your ad.

Exhibition Poultry Magazine®

P.O. Box 1027, Winnfield, LA 71483

<http://www.ExhibitionPoultry.net>

Ann Charles
Editor/Publisher

email: contact@SkyBlueEgg.com

Andrew S. Charles
Technical Support

email: admin@ExhibitionPoultry.net

Exhibition Poultry Magazine® publishes upcoming show listings and show results from the South Central states (TX, AR, LA, MS, OK) plus those results supplied by our paid advertisers. *We reserve the right to refuse any advertisement or article that is deemed to be of inappropriate content by the Managing Editor of this Publication.

JERSEY GIANT CLUB NEWS - FEB 2013

NOTES FROM MEMBERS

Joe Cavalieri (Pres)

Had some bad luck this winter losing 2 males I was hoping to use as breeders. Have only one left, heavy and solid but just doesn't have that height. That's one thing I noticed at the past National we had and it definitely hit home while comparing my stock to some of our members. My birds are too short. While focusing on weight I lost sight of length of leg. Giants need that height and width which I think makes breeding them such a challenge....and so rewarding when done right. The other thing I realized at our last national and very proud to admit is that if you plan on entering a Giant Meet bring your "A" game. I was reminded what a good ol' fashioned butt kicking feels like. So with some planning, praying and a good amount of culling not to mention some help from the membership I'll get back on track for sure. Come to think of it it's probably the main reason why I stuck with the Giants all these years, the great people of this club always willing to lend a helping hand and set you straight when you need it. THANKS! Good luck to all our Giant breeders this spring. Let's make 2013 the year of the Giant! Your giant friend Joe Cavalieri

Bob Vaughn (Sec) - As I write this it's about 25 below 0 with high winds - Brrr. It's always nice to see a Giant as a Class Champion, but how about Shane Manuel taking both Champ and Res American as well as Reserve Champion Large Fowl at the Forsyth Fowl Fanciers show! Giants are quickly growing popular in that part of the country and you can see why with nice Giants like Shane's and other members standing on Champion Row.

LOOKING AHEAD

2013 Jersey Giant Club National Meet

Will be hosted by the Pacific Northwest Poultry Association Winter Classic the October 19-20, 2013.

The show location will be in the Event Center at the Clark County Fair Facility, Vancouver, WA. The Event Center is a nice newer large heated building easily assessable being next to I-5. Fifteen minutes from the Portland, OR airport.

2014 Jersey Giant Club National Meet

Will be hosted by the Dixie Classic Poultry Club - Knoxville, Tennessee - Dec. 6-7 2014

This will be in conjunction with the APA National Show so will be a big event you won't want to miss!

SHOW RESULTS:

2013 Dist. VII - District Meet - Tennessee Valley Poultry Association - Dixie Classic -

Knoxville TN-Dec. 7-8, 2013. Junior Show - Champ American & Champ Large Fowl - Black Cockerel - Non-Member

Cape Fear Poultry Show - Smithfield, NC - December, 2012 - DISTRICT MEET - 39 Giants Shown.

Open Show - Champion Giant & Reserve Champion American - Black Pullet - Shane Manuel. Reserve Champion Giant - Blue Hen - Joys of Poultry. Best Giant Display - Blacks - Shane Manuel. Junior Show - Champ American & Champ Large Fowl - Black Cockerel - Non-Member.

The Jersey Giant Club: Sec/Treas: Robert Vaughn, 28181 Chickadee Ln, Pequot Lakes, MN 56472 (218) 963-6117.

Email rjvaughn2818@charter.net

Web Site: nationaljerseygiantclub.com



APANews - March

Big news in the APA. The website has been revamped. Please go to amerpoultryassn.com to check out the amazing transformation. It is a work in progress; we are still compiling information about shows and officers that will be added. One thing we would like include is a calendar listing all the shows, so if you could drop me a line with the dates of your show, contact information and email it would be a big help. The webmaster has started a photo contest. Please check out the complete rules and enter photos of your birds. Don't forget, little kids and baby animals are always adorable! We would like to hear what you think of the changes and any suggestions you might have, so drop me a line.

Dick and I were able to go to Newnan, GA. in February for the Chattahoochee Valley Poultry Show. I always enjoy the warm southern hospitality I find in the south. Good thing the people are warm, because the weather certainly didn't cooperate. Even us "northern" folks don't enjoy a biting cold wind. The weather didn't seem to affect the over 2500 birds in the show, just those of us without feathers! This show is one to watch, they grow bigger every year, but the show committee just keeps finding cages and room for everyone, and they still have time to stop and talk chickens.

The APA has semi-annual and annual meets set for 2013 and 2014. Now is the time to accept bids for the 2015 semi-annual. The Constitution states that the semi-annual meets are generally to be held between March 1 and June 15 of each year. If your club or organization is interested in hosting this event, please contact the office to get a bid form. This meet will be voted on at the directors meeting at the semi-annual meeting in Ventura, CA in April. The 2013 semi-annual is in Ventura, and the 2014 semi-annual will be in Hutchinson, KS. The 2013 APA annual meeting will be held in January 2014 in conjunction with the Northeastern Poultry Show in Massachusetts, and the 2014 APA annual will be held in December 2014 in

Knoxville Tennessee.

Just to keep you updated on interest in the APA, total new members in January was 69 and as of February 10 I have signed up 11 new members this month. That makes 80 new members since the first of the year. Interest in exhibition poultry just keeps growing! Look for those new members at the next show you attend and make them feel welcome.

I hope everyone is making plans to attend the semi-annual in Ventura, CA on April 13. If you have anything you would like to have discussed at the directors meeting, now is the time to contact your director.

Pat Horstman



APA ABA Youth Poultry Club

The club promotes opportunities to practice showmanship, cooperation and fellowship and to be involved with their home community and with the poultry fancy in general.

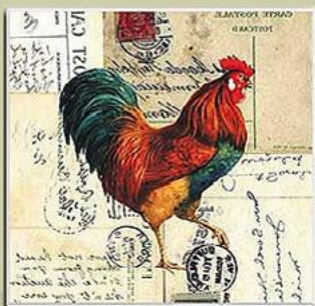
For more info go to: <http://www.apa-abayouthpoultryclub.org> or contact: Doris Robinson, National Director, 810 Sweetwater Rd., Philadelphia, TN 37846 ~ Phone: 865-717-6270 ~ Email: nanamamabrahma@att.net



AMERICAN POULTRY ASSOCIATION

Website: <http://www.amerpoultryassn.com>

Contact: APA Secretary
PO Box 306, Burgettstown, PA 15021
Phone: 724-729-3459
Email: secretaryapa@yahoo.com



JOIN NOW

Individual Membership:

\$20 per year / \$50 for 3 years

Outside USA & Canada: \$40 per year

Junior Membership:

\$15 per year / \$40 for 3 years



ABA Happenings

March 2013

Greetings to all. The ABA 2012 National Meet is all wrapped up. The trip to Stockton California made by many was great. There was a record amount of birds and lots of things to do. The ABA was very fortunate to be able to present Jim & Bonnie Sallee with their well deserved award of the ABA Lifetime Achievement award. This is a Very prestigious award shared by few. Congratulations Jim and Bonnie on so many years of showing your bantams.

It was also a time to say Thank you to outgoing Jeff Halbach for four amazing ABA years as President. The directors presented Jeff some Thank you tokens at the banquet and hope to be able to continue to work with him in the near future.

A big thank you goes to the ABA Board of Directors. Many took a long trip to support the ABA at this show. Weather actually kept some from being able to attend, but by and large - we had an amazing turnout.

The meeting was very exciting with lots of projects and changes on the table. The ABA is busy busy busy planning our next few meets. It was decided to award the 2013 ABA National to the TN Valley Poultry Cub (Dixie Classic) to on December 7-8, 2013 to be held in Knoxville TN. Also - the directors voted to place the 2014 National Meet (our 100th Anniversary Centennial show) with the Ohio Poultry Breeders in Columbus, Ohio. These are two events you will not want to miss!

We were fortunate to have another great Breeders Auction at this year's national Meet. Many thanks to the following for their donations - Mike Johnson of CO (not only for the donations, but for outstanding soliciting of the donations!!) ~ Andy Barnes of OK, Kyle Tripp of AZ, Brian Knox of NH ~ James Monk of NM ~ Garrett Tripp of AZ ~ Richard Sisson of SC ~ Amanda Clark of CA ~ and Chris Tamayo of CA. Your donations helped the ABA and also helped those who won the bidding some great prizes and birds.

Now - we will likely be sharing LOTS of great ideas, offers, and opportunities with our membership via emails and newsletters in the coming months. I will try to touch on some of them in these monthly columns, but the only guaranteed way to stay in the loop is to join the ABA and get on our email and mailing list. For a mere \$20 - it is an outstanding investment! Please allow 3-4 weeks for processing on new memberships. You can join online at www.bantamclub.com or send to ABA - PO Box 127 - Augusta, NJ 07822.



American Bantam Association

Website: <http://www.bantamclub.com>

Contact: **Karen Unrath**, Secretary
P.O. Box 127E, Augusta, NJ 07822
Phone: 973-383-8633
Fancybantams@embarqmail.com

President: **Jeff Halbach**
jeff.halbach@tds.net

Vice President: **Matt Lhamon**
mattlh@embarqmail.com

Membership Dues:

\$20 per year - \$50 for 3 years

\$400 for Life Membership
(check or money order only)

Outside of USA Rates:
\$30 per year - \$80 for 3 years

\$50.00 SPECIAL OFFER (US only) One year membership, plus current ABA Color Mini Bantam Standard, and New Member Patch.

New members receive a free copy of the latest available yearbook and quarterly.



Hatching and Shipping Since 1936

- **Egglayers**
- **Rare Breed Chicks**
- **Meat Birds**
- **Ducks**
- **Geese**
- **Turkeys**
- **Bantams**
- **Guineas**
- **Game Birds**

Free Color Catalog

Cackle Hatchery

P.O. Box 529

Lebanon, MO 65536

417-532-4581

www.cacklehatchery.com

April Issue Deadline is March 24th



National Call Breeders of America

A club formed for the promotion of breeding and exhibition of Call Ducks, offering National, District and Special Meets. Quarterly newsletters and annual yearbook.

Memberships: Junior (under 16) \$8/year; Individual \$15/year or \$29/2 years; Family \$17/year or \$33/2 years; Lifetime membership \$200. Visit our website at www.callducks.org to join online or purchase club merchandise, such as t-shirts, pins, patches, posters, etc.

For more information contact secretary Dennis Fuller, 1729 Otterville Blvd., Independence, Iowa 50644; 319-334-3497, wapsiwaterfowl@aol.com

(12-13)

SkyBlueEgg

Breeding & Exhibiting Large Fowl Araucana, primarily in Black, Black Breasted Red, Golden Duckwing, White & Blue.

My Araucana were Best and Reserve of Breed Araucana (large fowl) at the Rison, Arkansas Show on March 3rd. Congratulations to Patrick Owen and his excellent Sumatra who won BEST OF SHOW! Congratulations also to Drexel Jordan, for Champion Asiatic and Champion Continental, and Jason Mayeaux for Champion Featherleg! Plus, a special thank you to Frankie Harper and the Cleveland County Fairgrounds folks for putting on such a good show!



SkyBlueEgg Araucana

Ann Charles, Winnfield, LA
contact@SkyBlueEgg.com
Websites: Araucana.com
& SkyBlueEgg.com
Phone: (479) 234-7418



Black Breasted Red
Araucana Pullet,
Best Of Breed - Rison,
Arkansas, March 3, 2013



Golden Duckwing Araucana
Cockerel, Reserve Of Breed &
Best Of Variety - Rison,
Arkansas, March 3, 2013

ALSO

Black Breasted Red
Araucana Pullet,
Reserve of Variety - Rison,
Arkansas, March 3, 2013

The 2nd Annual Backwoods Poultry Show Rison, Arkansas March 2, 2013

Results supplied by Frankie Harper
Photos by Ann Charles

Open Show Results Judge: Pat Malone, TX

Bantam Class Champions

Champion Modern Game was a BB Red Modern exhibited by Roger West; Reserve was a Birchen exhibited by Elizabeth Moseley.

Champion Old English Game was a Black Old English exhibited by Bobby Durr; Reserve was a Crele exhibited by Gena McKerlie.

Champion SCCL was a White Plymouth Rock exhibited by Jerry McCarty; Reserve was a Black Australorp exhibited by Marguerite Lindemann.

Champion RCCL was a White Wyandotte exhibited by Jerry Carter; Reserve was a Black Wyandotte exhibited by Jerry McCarty.

Champion Feather Legged was a Black Cochin exhibited by Jason Mayeaux; Reserve was a Black Cochin exhibited by Jason Mayeaux.

Champion AOCCL was a Dark Cornish exhibited by Jerry McCarty; Reserve was a Dark Cornish exhibited by Jerry McCarty.

Champion Bantam Duck was a Black East Indie exhibited by Carla Hardwick; Reserve was a Gary Call Duck exhibited by Jimmy McConnell.

Champion Bantam BB Red Modern Game exhibited by Roger West. **Reserve** Champion Bantam was a White Plymouth Rock exhibited by Jerry McCarty

Large Fowl Class Champions

Champion American was a Rosecomb RIR exhibited by Frankie Harper; Reserve was a White Wyandotte exhibited by Rocky Vess.

Champion Asiatic was a Black Cochin exhibited by Drexel Jordan; Reserve was a White Cochin exhibited by Paul Bucella.

Champion English was a Red Dorking exhibited by Elizabeth Moseley; Reserve was a Silver Dorking exhibited by Elizabeth Moseley.

Champion Mediterranean was a Blue

Andalusian exhibited by Patrick Owen; Reserve was a Mediterranean was a Blue Andalusian exhibited by Patrick Owen.

Champion Continental was a Welsummer exhibited by Drexel Jordan; Reserve was a Black Copper Maran exhibited by Carla Hardwick.

Champion AOSB was a Black Sumatra exhibited by Patrick Owen; Reserve was a Silver Phoenix exhibited by Elizabeth Moseley.

Champion Large Fowl was a Black Sumatra exhibited by Patrick Owen. **Reserve** Champion Large Fowl was a Rosecomb RIR exhibited by Frankie Harper.

Champion Goose was a Chinese Brown exhibited by Rachel Hill.

Champion Water Fowl was an East Indies exhibited by Carla Hardwick; Reserve was a Gray Call exhibited by Jimmy McConnell.

Champion Turkey was a Bronze exhibited by Elizabeth Moseley; Reserve was a Narragansett exhibited by Elizabeth Moseley.

Grand Champion of the Show was a Black Sumatra exhibited by Patrick Owen. **Reserve Grand Champion of the Show** was a BB Red Modern Game exhibited by Roger West.

Junior Show Results Judge: Peyton Igo, LA

Champion Bantam was a Birchen Modern Hen exhibited by Will Bryles. **Reserve** Champion Bantam was a Black Cochin Hen exhibited by Hailea Raines.

Champion Large Fowl was a White Wyandotte exhibited by Colton Vess. **Reserve** Champion Large Fowl was a Light Brown Leghorn exhibited by Will Bryles. END



Champion SCCL was a White Plymouth Rock exhibited by Jerry McCarty



Champion AOCCL was a Dark Cornish exhibited by Jerry McCarty



Champion Water Fowl was an East Indies exhibited by Carla Hardwick.



Champion American was a Rosecomb RIR exhibited by Frankie Harper



Champion English was a Red Dorking exhibited by Elizabeth Moseley



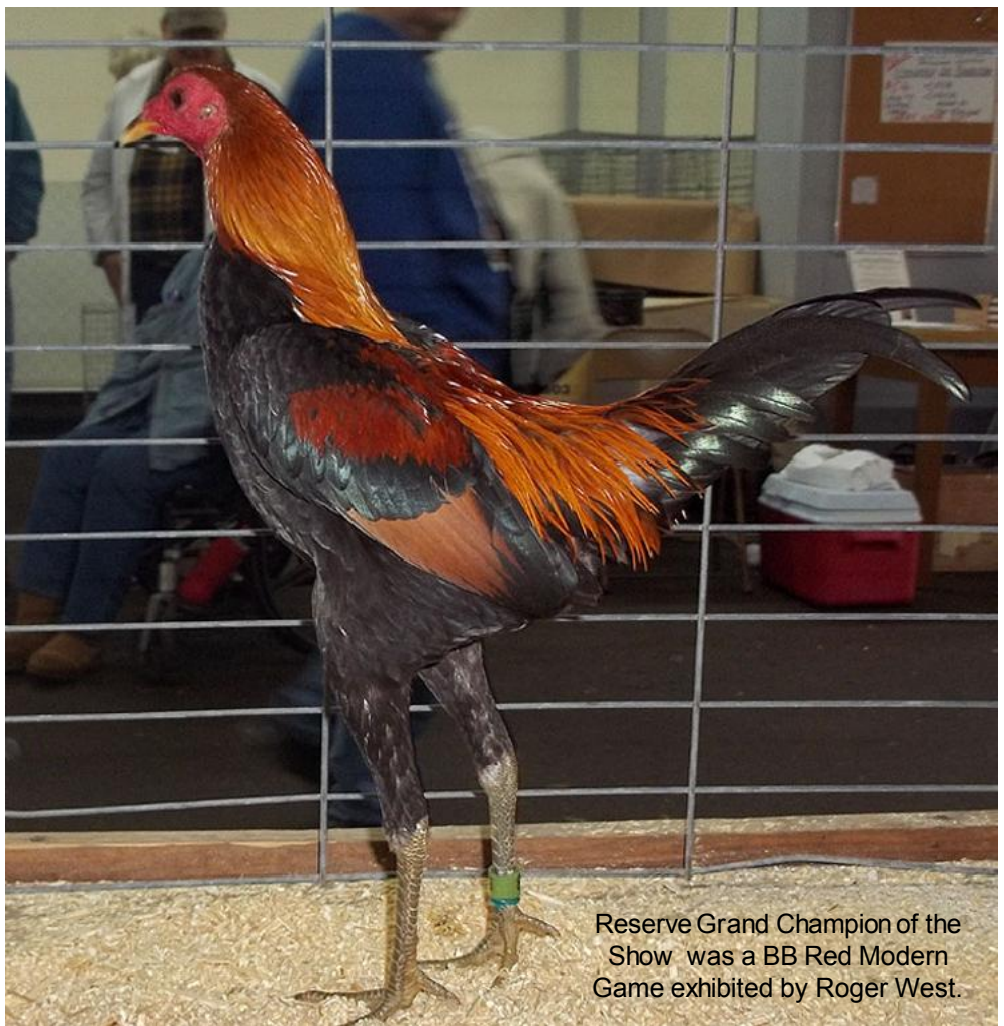
Champion Asiatic was a Black Cochin exhibited by Drexel Jordan



Champion Mediterranean was a Blue Andalusian exhibited by Patrick Owen.



Champion Turkey was a Bronze exhibited by Elizabeth Moseley.



Reserve Grand Champion of the Show was a BB Red Modern Game exhibited by Roger West.



BANTAM BLACK COCHINS

Rison, Arkansas

Backwoods Benefit Poultry Show
March 2, 2013

Champion Featherleg

Black Cochin Cock

Newnan, Georgia

CVPA Winter Show
February 15-16, 2013

Reserve of Variety

Black Cochin Cock

Haynesville, Louisiana

Pelican State Classic
December 3, 2012

Champion Featherleg

Black Cochin Pullet

**Bantam Black Cochin pairs
for sale starting at \$75 each.**

Jason Mayeaux

Alexandria, Louisiana

Email: jgm686@yahoo.com

Phone: 1-312-480-8563

More photos from the Rison, Arkansas show. . .



Grand Champion of the Show was a Black Sumatra exhibited by Patrick Owen.



Champion AOCCL - Junior Show - Dark Cornish Hen exhibited by Chancellor Farms



Champion RCCL - Junior Show - White Wyandotte Hen.



Champion Old English Game was a Black Old English exhibited by Bobby Durr



Champion AOSB - Junior Show - Black Sumatra Cock, exhibited by James Clark III.



OUTCROSSING TO CREATE NEW VARIETIES OF EXISTING BREEDS

By Brian Reeder

'Breed' is the overall form while 'variety' encompasses variations within that overall form, be it color or form variations. The various colors, patterns, comb types, etc that occur within a given breed are the varieties, but all the varieties are still the same breed and they share many basic points in common in spite of the minor differences of their respective variety. Either through a desire to create or as a side result of resistance breeding, new colors, comb types or patterns can be produced in an established breed. While some who are very conservative frown on this, there is nothing wrong with creating new varieties. If there were not people creating new varieties in the past, most of the beautiful variations we see in the many breeds would not exist.

Let us set some criteria for creating new varieties, just as we have in previous articles for resistance breeding. You will find that the criterion of the "round" is very useful. In almost all cases, we will select and outcross in a three fold round for developing new colors or forms within a breed just like we did when resistance breeding was our only goal. The three fold round of breeding is 1- cross two different forms, 2 - select the F1 and interbreed the F1 and/or backcross to either of the original forms, and 3 - select the best of the F2 and interbreed and/or again backcross to the breed we are seeking to make the new variety of. If

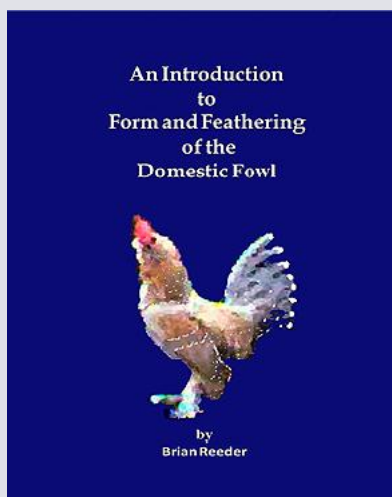
we are making our new variety with two resistant strains, then we are already a bit ahead of the game. When we say that we want to make a specific color, pattern, or form, we are assisted greatly by either knowing or finding out what the genes involved in both our starter forms and our new form are. For a thorough discussion of the genes of color forms and the genes of form and feathering, see my books, *An Introduction to Color Forms of the Domestic Fowl* and *An Introduction to Form and Feathering of the Domestic Fowl*.

By understanding the genetics involved, we have a very good idea of what we will have to do and how many generations it will take us to come back to both our physical breed type and our new varietal color/pattern/form. With fairly simple genes or where we do not have too many genes involved, the three round method works well and one round of three generation may see us nearly at both our form and coloring ideal. Let us look at a very simple example. We have red duckwing Phoenix (black breasted red - $e+/e+ s+/s+$) and we want to make red wheaten Phoenix ($eWh/eWh s+/s+$). This cross is simple and will work well in a three-round method. First we select a very hardy, resistant line of wheaten birds. Wheaten games or wheaten Malay or Shamo would be good choices, as in addition to the eWh allele, they will also add some height and size, something sorely lacking in many strains of Phoenix. Now we select the most resistant

wheaten and the most resistant bird(s) from our red duckwing Phoenix. We cross them and produce a heterozygous F1 ($e+/eWh s+/s+ P/p+$ { P - pea comb/ $p+$ - single comb, if our outcross was not single combed}). This F1 can be taken one of two ways.

The wheaten allele (eWh) is dominant to Duckwing ($e+$), but they "blend" in the chick down and the visual feathering of the F1 hens to be intermediate in visual type. Male heterozygotes are fairly indistinguishable from either pure allele phenotypes. Thus you can easily select heterozygotes of both sexes in the chick down phase at hatch to be bred together or backcrossed to pure Phoenix, or you can select only the F1 hens once they can be distinguished from the males and breed them back to pure red duckwing Phoenix to make the F2, F3, F4 etc, always keeping only the heterozygotes in each generation. In this way, you are bringing the overall type back to the Phoenix type, while maintaining the presence of the wheaten gene, which will be brought to heterozygosity later, when the Phoenix form type is fully established.

When you have reached a point in backcrossing that you feel you have the birds homozygous enough for all the Phoenix type traits, you would select all the pale or barely striped yellowish/whitish chicks, so as to have hens and roosters that are heterozygous for



Introducing Brian Reeder's *latest book . . .*

An Introduction to Form and Feathering of the Domestic Fowl

This book is available **NOW** at [Amazon.com](http://www.amazon.com) & [Authorhouse.com](http://www.authorhouse.com)

Amazon: <http://www.amazon.com/Bookstore/BookDetail.aspx?BookId=SKU-000450530>

Author House: http://www.amazon.com/Introduction-Form-Feathering-Domestic-Fowl/dp/1456747843/ref=sr_1_11?ie=UTF8&qid=1305509150&sr=8-11

Order your copy online today.

Plus see Brian Reeder's new blog at: <http://brianreederbreeder.blogspot.com>

eWh. These you would breed together and you would select for the 25% that would be eWh/eWh homozygotes in the chicks, determinable in this scenario by the pale, non-striped down of the chicks (for a complete discussion of chick down see my book *An Introduction to Color Forms of the Domestic Fowl*). All segregants (e+/eWh, or the partially striped, pale chicks – about 25%) could be disposed of and the fully e+ striped chicks (again 25%) could go back into e+ breeding if they are of good type and resistance or disposed of, as desired. It is necessary in some way to separate the chicks by down color, as the pure e+, pure eWh and e+/eWh roosters will all look identical when mature. In this example we are dealing with the addition of one dominant gene to the phenotype – replacing e+ with eWh. This is the easiest type of new variety to make.

If we had decided to make a red brown (eb/eb s+/s+) variety instead of wheaten, the eb allele is recessive, and then the three-round method becomes absolutely essential, as the heterozygote will only emerge when the F1 are bred together or the F1 is bred back to the eb homozygote parent breed, to make an F2. The scenario becomes somewhat more complicated when dealing with a recessive factor, requiring more birds to be raised and culled through. When dealing with multiple genes, or if we want to bring in a dominant or recessive gene that is found on an alternate e-allele, things become more complicated still and a working knowledge of the genes, as well as surety of identification of segregants, becomes even more important. The more genes we are attempting to add, the more birds we have to raise or the more steps we will require in our "rounds" to get the proper segregants to take back to the main strain for increasing the given breeds phenotype.

In very complex patterns or color forms, such as red-shouldered (as in Yokohama) or the solid colors (which are deceptively complex in spite of looking very simple), we often have to take a three-pronged approach. With this approach, we develop one line that is higher in our given breed's traits, while carrying the alternate gene(s), but segregating for those alternate additive genes. A second line is bred that is intermediate, where we try to keep as many breed traits as possible and as many of the alternate pattern/color genes as possible and try for as much homozygosity in both as possible. This second group is usually bred in the three-round style. The third line is bred for high levels of homozygosity of the pattern/color/form genes (additive genes), and is segregating for the breed traits. These

three lines are eventually all blended into the new variety of our given breed, where after a few years of breeding, the results come together to form our new variety. At any point in this process, crossing back to the original founder breed used to develop the new variety may be necessary to strengthen the breed traits.

I would recommend a thorough understanding of the genes, from the e-allele (first and foremost) to the additive genes that make up any given color/pattern/form you wish to develop. You will then need a strong understanding of the existing genome of the pure breed you wish to make the new variety in and then you need to understand the dominance/recessiveness/co-dominance of the genes involved. Unless you are working with forms on the same e-allele or you only wish to add one simple dominant or recessive gene, then it is best to make the basic e-allele form before you embark on making the more complex form; i.e., before you make buff, make them in wheaten, etc.

Often, the additive genes will change the visual appearance of the chick down for a given e-allele and make it unrecognizable, so by starting with homozygosity of the e-allele for your more complex pattern, that is one headache eliminated. For instance, for all those who wish to make buff varieties, it would perhaps be best to breed up a red wheaten line first and bring it to a very high level of homozygosity for breed traits before embarking toward buff, or for those who want a Lakenvelder colored variety of a given breed, it may be best to breed up a silver form of eb brown (like a dark Brahma or silver penciled Wyandotte without the penciling) before embarking on the actual Lakenvelder phenotype. Once the basic e-allele variety, with the correct s-allele and proper autosomal pheomelanin combination is achieved, making the more complicated variety is infinitely easier.

It should be obvious from this discussion that the creation of new varieties is not a quick process. Most people are not willing to take the time and effort, and perhaps after understanding what is involved there are those who thought they could quickly make a new variety who may well reconsider. While I encourage the development of new varieties in the existing breeds, I would strongly encourage anyone wishing to do this to consider the patience that must be involved, the split birds that should not be sold, and the fact that trying to pass something off as a new variety that is not a real variety of any breed is dis-

honest before they even consider embarking on such a path. The development of new varieties is very rewarding, but it is a long process filled with many obstacles. I do not mean to discourage anyone from attempting this, only to point out what is involved. Segregating birds that are not one variety or another are only relevant if the breeder wants a mixed color flock or is desperate for a resistant bird for resistance breeding and nothing else is available. They can be of use, but they are not an actual variety, and unless they have all the breed traits these segregating birds really aren't any breeds.

Furthermore, you cannot blend two e-alleles to make another one. You cannot cross E-based black to e+ duckwing to make ER birchen, though many people make this cross and pass them off as such. You can make silver blacks or red blacks in later generations from this cross but they are not true ER birchen, and unless they are pure for all the breed traits, they are not any given breeds either. To make a true ER variety requires the actual presence of the ER allele, and preferably homozygous at that. Another instance is that birds split for ER and eWh can appear much like eb birds in the females, but again these are not eb, and are no brown variety. Mille Fleur is a very specific combination of genes, but far too often, birds with some of those genes that superficially resemble Mille Fleur are marketed as such. These instances don't help the cause of developing new varieties. It is important to understand what a given variety is made up of genetically in order to reproduce that variety in another breed. A lack of understanding about the genetic makeup of a variety can lead to facsimiles that may superficially resemble the variety but is not it. This happens far too often. My concern about this was at the heart of the system of gene identification and nomenclature presented in my book *An Introduction to Color forms of the Domestic Fowl*. Without knowing the genetic makeup of a given variety it can be exceedingly difficult to reproduce it in a different breed and an attempt at a variety that misses the mark will usually result in an off type that is poorly representative of the beauty we were looking to recreate in the first place.

**Deadline for submission
of Show Results
for the April Issue
is March 24th!**

The Appenzeller Spitzhauben

By Chris Ferber

A newly formed club: "The Appenzeller Spitzhauben Club of America" has been born for this breed, and has been long overdue. This is a breed that has been in the states since the late 1950s and one of the goals of the club eventually is to get the breed accepted by the APA. This is a very striking breed, complete with beautiful spangled pattern and a forward facing mohawk-like crest.

The Appenzeller Spitzhauben originates from the Canton regions of Switzerland and dates back to the 15th century. This is a very unique breed of chicken in color, pattern, and conformation. The breed is considered a large fowl breed, however, it is on the small side of the definition. It was originally bred to survive the harsh climate and mountain environments of the Alps. The breed comes in a variety of colors in the Great Britain and Europe including silver spangled, gold spangled, chamois, black, blue, and now white, whereas, it is most commonly known in the states in the silver spangled and gold spangled variety.

This breed has only been in this country since the late 1950s, it seems that during WWII, there was a German POW camp near Florence, Alabama, and in that camp was a prisoner who was a farmer back in his native country. It is not known how long he was a prisoner, however, he liked the U.S. so much that when the war was over and he was returned to Germany, he made plans to immigrate to the U.S., specifically Alabama. He made good that dream sometime in the late 1950s, and when he arrived in Alabama, he brought with him two dozen Spitzhauben eggs. This is reportedly how they came into the U.S. Dr. McGraw became friends with him and was able to start his flock from this gentleman's stock. All the current spitzhauben in this country originate from this. They are excellent layers of white eggs and are adapted to foraging for food, free ranging for tidbits and other goodies, and are a great advantage for free range systems. One of the advantages of this breed is that they have no large comb or wattles, therefore avoiding freezing in the wintertime. They are a very active bird

always on the go foraging, exploring, and are very good flyers, often roosting in trees instead of the coop.

They are unique in their appearance having a forward facing crest, similar to a mohawk, and their unique color pattern which originally came in two colors, the silver spangled has black spangles on a white background color, and the gold spangled, has black spangles with its gold background color. The name Spitzhauben is named for the traditional hats worn by the ladies in the Appenzell region and thus means: "pointed hoods."

This breed so unique and inquisitive that it is fast becoming a favorite for the hobbyist. If anyone is looking for great egg production as well as a very unique and interesting chicken to raise, look no further! The Appenzeller Spitzhauben may be the breed for you. Those interested in joining the Spitzhauben club, you may visit: <http://appenzellerspitzhauben.com> and it's accompanying blog: <http://appenzellerspitzhauben.wordpress.com> which will be linking the newly formed Club Website when it is complete and online. There is a forum for all types of information from breed colors, breeder directory, standards, photo gallery, and much more. We welcome all interested to join and enjoy this lovely breed!.....

2013 ABA Election Results

Let's welcome the 2013 ABA Officers and Board of Directors. They are:

President - Matt Lhamon, Ohio
Vice President - Rick Hare, NY.

District Directors in their respective districts are as follows:

- 1) Brian Knox, New Hampshire
- 2) Richard Hickman, New Jersey
- 3) Bill Sandoe, Delaware
- 4) Tom Roebuck, Jr., Virginia
- 5) Mike Stichler, Ohio
- 6) Wil Diaz
- 7) Anthony Ashley, South Carolina
- 8) Tommy Lee, Georgia
- 9) Johnny Sprouse, Florida
- 10) Appointment
- 11) Dwight Madson, Missouri
- 12) Steve Jones, Texas
- 13) Mike Johnson, Colorado
- 14) Daniel Jerome, Washington
- 15) Chris Tamayo, California
- 16) Troy Laroche, Canada

A very special thanks goes to John Thomforde, MN for serving as our election commissioner. This is never fun - but really needed. Thanks!

Karen Unrath, ABA Secretary

BREED CLUBS

*Basic one-year listing
(3-4 lines) - just \$12*

Araucana Club Of America, Promoting the tufted, rumpled, blue egg laying Araucana. \$20.00 annual dues includes quarterly newsletter, breeders guide, and Araucana Handbook. Mail inquiries to: Araucana Club of America, 207 Pickens Drive, Pendleton, South Carolina 29670. Email: secretary@araucana.net. Visit our website and forum: www.araucana.net (10-13)

American Serama Association. Dues: \$15 Individual, \$20 Family, youth under 18 Free. AmericanSeramaAssociation.com. Contact: Dianne Brewer, 7955 Gilliam Road, Orlando, FL 32818, Psdianna@gmail.com. Sanctioning information for ASA Table Top Shows. Contact Edgar Mongold at edgarmongold@live.com (02-13)

American Sumatra Association, <http://sumatraassociation.org/> \$18/2yrs; \$25/3yrs. Doug Akers, 300 S. 400 W., Lebanon, IN 46052, email: dakers@purdue.edu (12-13)

American Sussex Association, Dues: \$10 or \$15. Mail to: 16813 Bridgeview Rd., Madill, OK 73446-8448. Website: americansussexbreeders.webs.com, americansussexassociation@yahoo.com, asamembership@ymail.com. (05-13)

National Call Breeders of America: <http://www.callducks.org>, Secretary: Dennis Fuller, email: wapsiwaterfowl@aol.com, 319-334-3497, Mail Memberships to: NCBA c/o Steve Jones, 9677 Butler Lane, Poetry, TX 75160 (12-13)

National Jersey Giant Club: Secretary: Robert Vaughn, 28143 CR 4, Pequot Lakes, MN 56472, <http://nationaljerseygiantclub.com> (12-12)

Rhode Island Red Club Of America: <http://www.showbirdbid.com/joomla/redclub>, Secretary: Frank Harris, 15483 Coatesville Rd., Beaverdam, VA 23015, email: fbharris@earthlink.net, 804-883-5682 (12-12)

United Orpington Club: <http://www.unitedorpingtonclub.com>, Secretary: Christina Korfus, PO Box 681, Cle Elum, WA. 98922, email: korfuskluckers@aol.com, 509-607-0405 (12-12)

SOUTH CENTRAL APA & ABA JUDGES

*One-year listing, bold, and
underlined, with details just \$12.*

ARKANSAS

Jacob Bates 614 N. Hancock St. , Charleston,
AR 72933 479/965-5222.

John D. Tunstill 3170 S. Hunt Lane ,
Fayetteville, AR 72701-8058 501/442-4209.

LOUISIANA

JIMCRAIN, APA General Lic #1184, ABA Gen-
eral Lic #344, Bantam Duck #157, Serama #26.
318-455-9980: 1520 Fincher Creek, Minden, La.
71055 (03-20)

Jerry McCarty 513 McKinley St. , Haughton,
LA 71037 318/949-0027.

OKLAHOMA

L. C. "Corky" Higbee 6100 Cemetery Road ,
Noble, OK 73068-8604 405/872-7504.

Richard Peters P.O. Box 735 , Noble, OK 73068

405/527-8513.

Robert D. Murray 920 S.E. 21st Street , Okla-
homa City, OK 73129 405/632-7085.

TEXAS

SAMUEL BRUSH, 1009 Hillview Drive, Keller,
TX 76248-4012, slbrush@verizon.net,
817.379.6475, APA General License. (12-13)

James Cooper 1111 Woodbine Street , Kemp,
TX 75143 903/498-7168.

MONTY FITZGERALD, 1713 CR 4280,
Decatur, TX 76234; 940-393-8907,
mfitzgerald@mypbmail.com. APA General Li-
cense, Bantam Chicken & Bantam Duck (12-12)

Tracy Hill 10721 Truman Street, Amarillo, TX
79118 806/622-2488.

Melody Jonas 436 CR 3605 , Lampasas, TX
76550-9711 512/556-2800.

Dwayne Jonas 436 CR 3605 , Lampasas, TX
76550-9711 512/556-2800.

STEVE JONES, 9677 Butler Lane, Poetry, TX
75160, ghia4me@sprynet.com, 972-636-9093,
APA/ABA General License. (12-13)

Charles Mahoney 11312 Earlywood Drive , Dal-
las, TX 75218 214/324-3911.

PAT MALONE, 4903 Brazowood Circle, Ar-
lington, TX 76017, 817.478.2397, PatMalone@
pleasantridgechurch.org. APA General Li-
cense, Bantam Chicken & Bantam Duck (12-12)

Jeff Maxwell Jr. 5230 Abercreek, Friendswood,
TX 77546 409/258-5662.

Joe H. Osburn 296 CR 4896 , Boyd, TX 76023
817/220-6261.

ADDITIONAL STATES

JEFF HALBACH, 31601 High Dr. Burlington,
WI 53105. jeff.halbach@tds.net, 262-534-6994.
Bantam Chicken & Duck. (12-13)



The Magnolia Classic

MARCH 23, 2013

Leesville, Louisiana

Vernon Parish Fairgrounds

Judge: Pat Malone • APA/ABA Approved

Website: <http://www.TheMagnoliaClassic.com>

**Show Secretary: Ann Charles, contact@SkyBlueEgg.com,
479-234-7819 (lv msg)**

**Show Superintendent: Jason Mayeaux,
jgm686@yahoo.com**

**Rosettes to Class Champions, Trophies to Champion
Large Fowl, Champion Bantam and Show Champion.
Novice Exhibitor and Junior Awards.**

Upcoming APA & ABA Shows

(South Central USA: LA - AR - OK -TX - MS)

March 2013

March 2, 2013

Lagrange, TX, South Texas Classic, Fayette County Fairgrounds. Judge: Aaron Hamilton. Contact: Danny Hughes, P.O. Box 251, Garwood, TX 77442; Phone: 979-758-3471

March 2, 2013

Rison, Arkansas, Cleveland County Fairgrounds. Open Judge: Monty Fitzgerald, TX. Junior Judge: Peyton, Igo, LA. Entries Close: February 22, 2013. Contact: Frankie Harper, PO Box 552, Rison, AR 71665; Phone: (870) 370-3427

March 2, 2013

Pryor, Oklahoma, Mayes County Fairgrounds. Bantams Only. Contact: Kenneth Kvittum, PO Box 991, Chouteau, OK 74337, kennethkvittum@yahoo.com

March 23, 2013

Leesville, Louisiana, Vernon Parish Fairgrounds. The Magnolia Classic Poultry Show. For entries an information contact Ann Charles, 479-923-4768 or email: contact@SkyBluEgg.com. Mail entries to: PO Box 1027, Winnfield, LA 71483. Website: <http://www.TheMagnoliaClassic.com>

March 23, 2013

Beaumont, Texas, South Texas State Fairgrounds, South Texas State Fair. Judges: Jim Crain, Dwayne Ballard. Contact: South Texas State Fair, 7250 Wespark, Beaumont, TX 77705. Phone: 409-429-5735. Website: www.ymbi.org

April 2013

April 6, 2013

El Dorado, Arkansas, Fairgrounds. South Central Regional Classic. Contact: Bill & Debbie Atwood, 1557 Grant 733, Sheridan, Arkansas 72150. (870) 942-7361, bildeb@windstream.net.

April 13, 2013

San Marcos, Texas, Hays County Civic Center. Fancy Feathers. Contact: Jaci Kroupa, fresheggs91@yahoo.com; website: <http://www.fancyfeatherstx.org/>

April 20, 2013

Jennings, Louisiana, Jeff Davis Parish Fairgrounds. Judge: Jim Crain. For more information, contact: Maddi Williams, 940-736-9491 MaddiWilliams@yahoo.com, email: clpoultryclub@yahoo.com, website: <http://clpoultryclub.wix.com/mainpage>

May 2013

May 4, 2013

Little Rock, Arkansas, Arkansas State Fair Spring Show, Arkansas State Fair grounds. Entries at: <http://arkansasstatefair.com/livestockindex/Springfair.html> or contact: contact Dr. Keith Bramwell 479-841-6498.

October 2013

October 19, 2013

Lebanon, Indiana, Boone County 4-H Fairgrounds. Central Indiana Poultry Show, <http://poultryshow.org>. Contact: Ron Patterson, rpatter815@embarqmail.com, 765-676-6192, or Doug Akers, 765-482-7182, dakers@purdue.edu.



Central Louisiana Poultry Club's

Zydeco Poultry Show

April 20th 2013

Jennings, Louisiana

APA/ABA Approved

Judge: Jim Crain

~Very Limited Cages~

Jeff Davis Parish

Fairgrounds

Also holding a "fun" show open to all breeds & mixed breeds • Egg show • Poultry seminars done by the LSU Ag center • Easter egger egg hunt • Swap meet area • Silent and live auction • Plus "People's Choice" award for favorite bird.

<http://clpoultryclub.wix.com/mainpage>

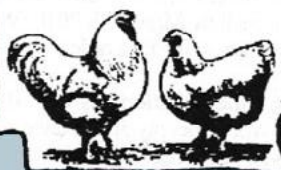
For more information, contact:

Maddi Williams, 940-736-9491

MaddiWilliams@yahoo.com,

clpoultryclub@yahoo.com

The South Central Regional Classic



El Dorado, Arkansas

The 37th Annual Spring Classic

April 6, 2013

Judges: Pat Malone & Dwayne Ballard

Contact: Bill and Debbie Atwood, 1557 Grant 73, Sheridan, AR 72150

Phone: 870-942-7361

Email: bildeb@windstream.net



Smith Poultry & Game Bird Supplies

14000 W. 215th Street, Bucyrus, KS 66013

Ph. 913-879-2587 7:30 A. M. - 3 P. M. CST M-F

24-hour Fax: 913-533-2497

Email: smithct@centurylink.cnet

Web www.poultrysupplies.com

Our family-owned company has offered competitive prices & given fast, dependable service to our customers since 1988. 40-page color catalog contains many items: bands, books, brooders, catch nets, coops, feeders, founts, incubators, medications, netting, pullorum antigen, Tek-Trol & Oxine disinfectants, vaccines, vitamins, etc. Call us & we'll deliver your order to the shows & swaps we attend in 2013.

☐

Check box above for this size ad.

1 column by 3
inches. No extra
charge for small
color picture.
Price: **\$20**

☐

Check box above for this size ad.

1 column by 2". No
picture... just
\$12.50

☐

Check box above for this size ad.

1 column by 4
inches. No extra
charge for color
picture.

Price: **\$25**

☐

Check box for this size ad.

This is 2 columns by 4 inches. There are no extra charges for a color picture. Win ads, poultry for sale, upcoming shows, breed clubs, and all commercial advertising is welcomed. This size ad with a color picture is just **\$50** for one run.

Special One-Year Packages: Any ad run for a full year, with only minor text changes throughout the year, PRE-PAID in full, is 50% off the single insertion rate. Example: An ad this size, run for one year (12 issues) is only \$300 (*1/2 the regular price*). And NO extra charge for color!

Special 3 month Packages: Any ad run for 3 months, with only minor text changes throughout that time, PRE-PAID in full, is **25% off** the single insertion rate. Example: A 2 column by 4 inch ad package run for **3 issues** (see ad size above) is just **\$112** if pre-paid. (a \$38 savings). This is ideal for clubs advertising their shows.

Print your ad copy below: (or email: ads@ExhibitionPoultry.net)

Show Name: _____

Make checks payable to: **Exhibition Poultry Magazine®**

Mail to: E. P., Ann Charles, P. O. Box 1027, Winnfield, LA 71483

Clearly print your email address below if you want a proof of your ad:

Your Email: _____

ExhibitionPoultry.net