

# Exhibition Poultry

The #1 Internet Publication For Information On Showing & Breeding Exhibition Poultry

Volume 9 No. 2 • <https://www.ExhibitionPoultry.net> • April/May 2020



A White Wyandotte cockerel, submitted by Jonathan Patterson of Bluffton, Indiana, was the overall Open Show Champion of EPMag's Spring e-Show.



*The American Poultry Association*

APA



*Since*  
1873

**We invite you to join**

**MEMBERSHIPS**

**INDIVIDUAL, JUNIOR AND ENDOWMENT TRUST LIFE**

APASECRETARYADKINS@GMAIL.COM

**Visit Our Website**

**WWW.AMERPOULTRYASSN.COM**



# Exhibition Poultry

## Table of Contents

American Poultry Association News. . . . .	04
American Bantam Association News. . . . .	05
EPMAG Spring e-Show Results. . . . .	07
Not 'JUST' a Brown Duck . . . . .	16
A Reminder— Black Flie s . . . . .	21

## Advertisers Index

American Poultry Association . . . . .	02
American Bantam Association . . . . .	05
Smith Poultry Supplies . . . . .	17
Pine Hill Silkies . . . . .	19
Shane's Bantams . . . . .	19
SkyBlueEgg Araucana . . . . .	20
Youth Exhibition Poultry Association . . . . .	21
Nutrena . . . . .	23
CVPC Show . . . . .	24

**On The Cover . . . . .** A White Wyandotte cockerel, photo submitted by Jonathan Patterson of Bluffton, Indiana, was the overall Open Show Champion of EPMag's Spring e-Show. Photo by Jonathan Patterson.

## Exhibition Poultry Magazine®

Ad deadline is the 15<sup>th</sup> of the month preceding issue date.

### Advertising & Subscription

To subscribe, or submit display ads, classified ads, club, show, and judges go to: <https://www.ExhibitionPoultry.net>

### **Exhibition Poultry Magazine**

180 Snowden RD., Winnfield, LA 71483

Editor/Publisher: Ann Charles, (318) 209-9802 (txt only please)  
email: [office@exhibitionpoultry.net](mailto:office@exhibitionpoultry.net)

IT/Publisher: Andrew Charles, (318) 413-9489 (leave message)  
email: [admin@exhibitionpoultry.net](mailto:admin@exhibitionpoultry.net)

Exhibition Poultry Magazine publishes advertising, articles, and show results from across the United States and Canada. We reserve the right to refuse an advertisement or article that is deemed to be inappropriate content by the Managing Editor of this publication. The views, information, or opinions expressed in articles or advertising in this publication are solely those of the individuals involved and do not necessarily represent those of Exhibition Poultry Magazine, its employees, or its owners.

## From the Editor . . .

This is not one of those issues where I find I have nothing to write about. It is there—staring right at us. . . Pandemic and all the associated complications. It is one of those 'once in 100 years' events if what they tell us is true.

I don't know about you, but all the canceled Spring Shows seems minor compared with shelter-in-place orders, wearing masks and gloves to town, and the unending sanitization of everything! Honestly, being the introvert that I am, I wish they would double the 'limits' on everything in the stores so that I could go to town once a month instead of every 7-10 days. I am not hoarding. I just wish I could 'shelter-in-place' a bit longer than is currently feasible. But, as long as we can stay healthy—we adapt. That is human nature—one of our better qualities as a race.

One adaptation that manifested itself recently would be our last minute e-Show announced *after* our regular deadline for this issue. We had some awesome entries submitted in the week that we accepted them. Thank you to everyone that participated. We may do this 'e-Show' thing again.

Of course, accepting the entries was just the first step. Processing the entry data, photos, and grouping them in their classes, then converting the various classes into PDF's for the judges instantly thrust me into the role of show secretary, and show clerk, as I was ready to wrap up this issue. Thank you so much to our judges, Rip Stalvey, Mike Schmidt, and Bart Pals for taking on the challenge of judging birds that they could not hold, and personally inspect, and in some cases have to make assessments from not-so-great photos. We will try to design the process a bit better if/when we do our e-Show again.

Congratulations are in order to the new APA President, Mark Podgwaite, and his new Vice President, Bart Pals, (one of our e-Show judges).

In closing, hug those you love, figure out what is really most important to you, and 'stay home—stay safe'. Until next time—

Ann Charles

ISBN 978-1-7923-0628-0  
5 3 6 0 0 >



9 781792 306280



### APA News

Hello to everyone from the APA Office. Things are beginning to warm up but it remains pretty wet here in southern Ohio. I hope you are well on your way to hatching all of those champions that we all expect when we set those eggs. I have not yet begun hatching but undoubtedly will start saving eggs soon.

In an earlier message I thanked several individuals for their dedication to the APA and managed to leave someone out. Paul Monteith of Ontario, Canada is also retiring from the APA Board after many years of service and should have been mentioned for his efforts. Paul and I go back a long way. It was him and Carl Fosbrink that got me started into the administration part of the poultry fancy by asking me to serve as Secretary of the Plymouth Rock Fanciers Club. I will miss Paul's presence in the APA Board meetings and wish him all the best as he devotes more time to breeding and exhibiting birds. I hear his Large Fowl Cochins are coming along very nicely and I know he will

only put birds in the show pens in top condition!

Thanks to everyone who took the time to complete the survey that was sent out through Member Planet. You have given the Board many things to think about and I am sure many of the ideas suggested will be given careful consideration. There were a couple of things mentioned that I feel I should discuss. One is the Member Planet program. I use Gmail and so part of my comments will come from my experiences, but I suspect most email services have similar features. There were some who completed the survey who indicated they are not getting anything from Member Planet. If this applies to you, please check some of the other folders you have. I know my Member Planet messages frequently come into my "Promotions" folder. Yours may be going to a similar location or even your "Spam" folder. A related concern was that some are not getting the newsletters. They too can be coming into your email in a folder other than your Inbox. I am also happy to send you paper copies of the newsletter by mail if that is your choice. All you have to do is let me know.

I recently sent out "Final Notice" postcards to about 500 individuals and clubs that had expiration dates between 12/1/2019 and 2/29/2020. Thank you to those who have submitted your dues and also to those of you who pointed out that my records were in error. Most of the prob-

lems were with those who had paid through Member Planet and I had not correctly updated my database. If this was the case for you, all I can say again is that I am sorry for the inconvenience. On the plus side, sending out the postcards does help in making sure all of the records are accurate and complete. I continue to work on keeping my information and that in Member Planet both as accurate as possible. Please remember that even if you change your address, phone number, or email address in Member Planet I am not automatically informed that you have made those changes so please update me as well with a call or email. As to the renewals that I missed, all I can say is that I am human and will try to do better in the future.

I hope to see everyone at a show soon and have a great Spring!

David Adkins  
Secretary  
American Poultry Association

**Advertising and article submission deadline for our 'Summer Issue' (June/July/August 2020) is May 15th.**

(We will be adjusting our print schedule during the summer months so that in the future all 6 issues of each edition fall within one calendar year.)





### ABA Happenings

We are happy to announce the 2019 Master Exhibitors and Master Breeders. The following are recognized at this milestone in the ABA award system.

An ABA Master Exhibitor must accumulate 20 starred

wins in bantams. A starred win is defined as a win in a class of 100 or more. These awards are given id numbers commensurate with the number of starred wins that they were awarded at the time of achievement. I am thrilled and proud to share with you the following 11 ABA members who achieved this in 2019. Note: This is a preliminary list. We still have a few 2019 show reports to process and will add to this list if needed before printing of yearbook.

### ABA 2019 MASTER EXHIBITORS

#513 (29 wins) Derek Brady Family, CO. #514 (28 wins) Dameon Roach, Currahee Ban-

tams, GA. #515 (25 wins) Payton Stuart, TX. #516 (23 wins) David Freeman, KY. #517 (21 wins) Robert Chapman, TX, . #517 (21 wins) James W. Landon, IN. #519 (20 wins) Jack Bryant, TX. #519 (20 wins) Curtis Chatelain, UT. #519 (20 wins) Dwight & Dustin Morgan Family, IN. #519 (20 wins) John & Alycia Harvey, FL. #519 (20 wins) Michael Gilbert, WI.

Master Breeder awards are awarded to those ABA members, who over a period of not less than five years, accumulate 20 starred wins (wins in a class of 100 or more) in a single breed and variety. We are honored to award this to the following 17 winners:

# Come join the American Bantam Association and Spread Your Wings!

## FLYING START SPECIAL

- One Year Membership
- 2020 Standard
- Mini Standard
- 2019 Yearbook • Euro Sticker
- Vintage ABA Yearbook

ALL FOR

# \$100





As an ABA member, you will receive top breeders contact information, coupons for poultry items, best pricing on ABA Legbands, updated show information, Bantam Standard for judging, and so much more!

**Visit [www.bantamclub.com](http://www.bantamclub.com) to join**  
**or send check or money order to**  
**ABA, PO Box 127 - Augusta, NJ 07822**

*Continued from page 5 . . .*

Bryant Nunnally & Elvis Pate, B & E Bantams, AL- Silver Ginger Old English Game 22 wins

Beamer's Poultry, John Beamer, Ontario - Light Brahma 21 wins

Beams Poultry Yard, David M Sr. & David M. Jr., AL- Black Cochinchin 23 wins

George J. Beyer, NY - SC Light Brown Leghorn 21 wins

Black Coffee Ranch, Chad Satterfield, SC -Quail Belgian d'Anver 20 wins

Wade & Kasey Collins, OK - Black Cochinchin 20 wins

Dameon Roach, Currahee Bantams, GA - Brown Red Old English Game 23 wins

Brian Decker, MD - Crele Old English Game 20 wins

Robert Downing, Jr., KY - Wheaten Old English 20 wins

Dwayne & Melody Jonas, TX - Crele Old English Game 21 wins and Golden Sebright 23 wins

Kane's Feathered Friends, Tom & Briget Kane, VA - BB Red Modern Game 20 wins

James W. Landon, IN - Silver Sebright 20 wins

Rico Sebastianelli (C-R Ducks) Alberta - Black Cochinchin 21 wins

Michael C. Spencer, UT - Buff Brahma 20 wins

Kyle Tripp, AZ - Black Old English Game 21 wins

Wade Walker, Walker Bantams, OK - Birchen Modern Game 25 wins

We would also like to recognize those who are working towards the Master Level awards with the annual Certificate of Merit awards. These ABA members are recognized once they earn a minimum of five starred wins (wins in a class of 100 or more) in a single breed and variety. This year, we are pleased to

recognize the following ABA members for their hard work and commitment to their birds:

Marty Abrahamsen, AR -White Japanese (8 wins); Clell Agler, OH - SC Rhode Island Red (5 wins);

Tim Ballenger, WV -Black Langshan (5 wins); Beams Poultry Yard, AL – White Japanese (5 wins);

Derek Brady Family, CO – Gray Call Duck (5 wins) and Black Wyandotte (6 wins); Jan Brett, MA -WC Blue Polish (5 wins); Michael Lee Brummond Family, TX -Dark Cornish (6 wins); Jack Bryant, TX – Black Old English Game (7 wins); Jeff Burkhart, Burkhart Bantams, TX - SC Rhode Island Red (5 wins); Kenneth & Kenley Byess, GA - Black Tailed White Japanese (6 wins); C & C Poultry, CT – White Old English Game (7 wins); Copper Ridge Farm, FL -Black Wyandotte (7 wins); Nicole Cox, NC – Light Brahma (6 wins); Glen Crocker, TX- White Crested Black Polish (5 wins); Tony Davis, FL - Bearded White Silkie (13 wins); Dog River Bantams, VT -White Plymouth Rock (5 wins); Ron Gilbertson, MN – Black Old English Game (5 wins); Josh Griffin/Griffin & Redwine, IN -White Old English Game (6 wins) and Brown Red Old English Game (5 wins); Dwight Madsen/Heads up Bantams, MO - Golden Sebright (5 wins); Sharon Honea, MS - Bearded White Silkie (7 wins); Dustin Hunter, TX -Black Cochinchin (11 wins);

Igo & Dooly Bantams, LA – Black Old English Game (6 wins) and White Old English Game (10 wins); Dwayne & Melody Jonas, TX -Birchen Modern Game (10 wins) and Black Old English Game (6 wins); Gale & Tony Lahr, IN -New Hampshire (7 wins); Larry Lawrence, IN – Barred Plymouth Rock (5 wins); Reynold Loecker, SD – Black Japanese (5 wins) and Black Sumatra (5 wins); Jason Mayeaux, LA -Black Cochinchin (5 wins); Don Monke, OH – White Wyandotte (9 wins); Kate Morreale, MA - Brd Black Silkie (5 wins); John Philpot, KY -Black Wyandotte (6 wins); Christie Ross, OK – Blue Cochinchin (5 wins); Julie Robertson, MO – Black Wyandotte (5 wins); J&J Call Ducks/ J&J Robertson, MB – Pastel Call Duck (5 wins); Cindy Rusk, MO – White

Call Duck (5 wins); Kraig Shafer, OH- Barred Plymouth Rock (5 wins); Phil & Beth Shank, IN – Black Wyandotte (5 wins); Ricky Sheffield, GA -Brassy Back Old English Game (5 wins); Cara Smith, CO - Bearded Black Silkie (5 wins); Payton Stuart, TX – White Call Duck (11 wins); Randy & Kristi Thompson, TN - Black Langshan (5 wins); James Treadway, TN -Lemon Blue Old English Game (6 wins); Wendy Watkiss, TX - Bearded White Silkie (6 wins); Watson's Bantams - Monte Watson, OK - Red Pyle Modern Game (7 wins); Garry Wells, NY -Blue Wheaten Old English Game (5 wins); Samantha Wulff, IN - Lemon Blue Modern Game (8 wins); Ronnie Youngblood, KY - Mille Fleur Old English Game (6 wins)

Reminder: 2020 ABA Yearbook Ads – Deadline for submission is April 15th. We will likely extend this date – so please check the website for new dates. Let's celebrate another great year of showing our Bantams!!! Take an Ad ! I hear they work well.

**Color:** Full page \$175; ½ page \$125; Full page - Collective Ads for Club/Breed Club (maximum six individual ads) \$240; Qty discount on collective ads – three or more pages \$180 ea.

**Black and White:** Full page \$125; ½ page \$85; ¼ page \$65.00; Judges Ad \$35.00 ; Full page - Collective Ads for Club/Breed Club (maximum six individual ads) \$120; Qty discount on collective ads – three or more pages \$90 ea.

To join the ABA, please visit our website at [www.bantamclub.com](http://www.bantamclub.com). Membership is \$25 per year, \$70 for three years, or \$100 for five years. Our mailing address is PO Box 127, Augusta, NJ 07822. The American Bantam Association has been servicing our membership since 1914!

Karen Unrath  
ABA Secretary



# Exhibition Poultry Magazine

## Spring 2020 e-Show Results

Thank you to everyone who sent an entry for our e-show. Entries came in from top breeders and exhibitors, both in the Open and Junior divisions, from coast to coast, including Canada. We would also like to give a huge thank you to our judges: Rip Stalvey for judging the large fowl, Mike Schmidt on the bantams, and Bart Pals for waterfowl. Your time, effort, and expertise are truly appreciated!

On the following pages are the results of both the Open and Junior shows with the top winners listed below. Congratulations to everyone! Ann & Andrew Charles, EP Mag.

### OPEN e-Show Champions

Champion Large Fowl: White Wyandotte cockerel submitted by Jonathan Patterson. Reserve: Black Sumatra hen submitted by Raven Meyers.

Champion Bantam: Rosecomb White Leghorn pullet. Reserve: Black Silkie Hen.

Champion Waterfowl: White Call drake submitted by MacKenzie Hager. Reserve: East Indie hen submitted by L Beasley.

Grand Champion Open Show: White Wyandotte cockerel submitted by Jonathan Patterson. Reserve Show Champion: Bantam Rosecomb White Leghorn pullet.



### JUNIOR e-Show Champions

Junior Champion Large Fowl: Light Brahma pullet submitted by Khalie Franklin. Reserve: Speckled Sussex hen submitted by Jillian Skeels.

Junior Champion Bantam: Single Comb White Leghorn pullet. Reserve: Light Brahma hen submitted by Skyler Bennet.

Junior Champion Waterfowl: White Call drake submitted by MacKenzie Hager. Reserve: East Indie hen submitted by L Beasley.

Grand Champion Junior Show: White Call drake submitted by MacKenzie Hager. Reserve Show Champion: Light Brahma pullet submitted by Khalie Franklin.







Champion **American** (9 entries): White Wyandotte cockerel submitted by Jonathan Patterson, Bluffton, IN. Reserve: Blue Jersey Giant hen submitted by Weezee Sellars.



Champion **English** (5 entries): Buff Orpington cockerel submitted by Matthew Brehmer, San Juan Capistrano, CA. Reserve: Black Australorp cockerel submitted by Steve Bundy.



Champion **Asiatic** (11 entries): Black Cochin Hen submitted by M&M Exhibition Poultry, Harrod & Holland, Ohio. Reserve: Black Cochin Hen submitted by Jake Henderson.



Champion **Mediterranean** (2 entries): Andalusian cock submitted by Kevin Seward, Ontario, Canada Reserve: Minorca Pullet submitted by John Tinsley.





Champion **Continental** (10 entries): Barnevelder hen submitted by Trisha Strahan, Cottonwood, CA. Reserve: Silver Spangled Hamburg cockerel submitted by Caitlyn Stover.



Champion **Turkey** (3 entries): Royal Palm young tom submitted by Caralee Stover, Ada, OH. Reserve: Narragansett tom submitted by Jennifer Pesky.



Champion **AOSB** (4 entries): Black Sumatra hen submitted by Raven Meyers, Silver City, NM. Reserve: Black Ameraucana cockerel submitted by Mindy Waters.

## ***EPMag Spring e-Show***

### **Open Large Fowl Results**

Champion Large Fowl: White Wyandotte cockerel submitted by Jonathan Patterson.

Reserve Champion: Black Sumatra hen submitted by Raven Meyers.

### ***(Large Fowl) Reserve Open Class Winners . . .***







Open Champion **MODERN** (2 entries): Lemon Blue cockerel submitted by Samantha Wulff, Connersville, IN. Reserve: Birchen Pullet submitted by Jeff DuGuay.



Open Champion **OEG** (7 entries): White hen submitted by K & K Bantams, McKinney, TX. Reserve: Wheaten cockerel. Submitted by Mark Brown.



Open Champion **SCCL** (8 entries): SC White Leghorn hen submitted by Raymond Tilley, Odessa, TX. Reserve: White Naked Neck pullet submitted by Mark Cunningham.



Open Champion **RCCL** (11 entries): White Rose Comb Leghorn pullet submitted by Jeff Shenk, Mt Jackson, VA. Reserve: Black Wyandotte hen submitted by Callum McLeod.





Open Champion **AOCCL** (6 entries): White Crested Black Polish hen submitted by Melissa Dean, Brookville, PA. Reserve: White Cornish cockerel submitted by Tim Puckett.



Open Champion **FL** (27 entries): Black Silkie hen submitted by Paige Kleckner, Aledo, Texas. Reserve: d'Anvers hen submitted by Julie Graves.



Champion **Waterfowl** (4 entries): Pastel Call duck submitted by Tracey Jenner, Dunnellon FL. Reserve: African gander submitted by Paul Gilroy.

## ***EPMag Spring e-Show***

### **Open Bantam Results**

Champion Bantam: White Rose Comb Leghorn pullet submitted by Jeff Shenk.

Reserve Champion: Black Silkie hen submitted by Paige Kleckner

### ***(Bantam) Reserve Open Class Winners . . .***







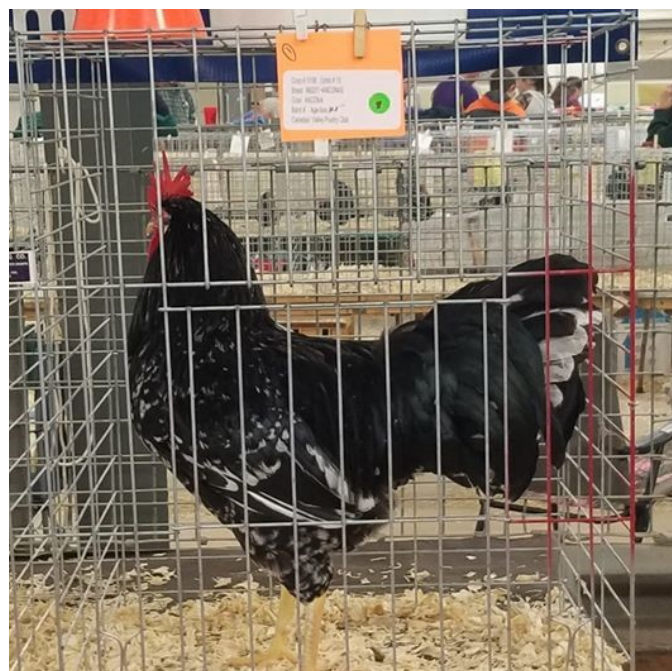
Champion Junior **American** (1 entry). Golden Laced Wyandotte hen submitted by Kailynn Cox, Foster, OK.



Junior Champion **Asiatic** (5 entries): Light Brahma pullet submitted by Khalie Franklin, Joshua, TX. Reserve: Light Brahma hen submitted by Ashton Yealder.



Junior Champion **English** (1 entry): Speckled Sussex hen submitted by Jillian Skeels, Rocky Mountain House, AB, Canada.



Junior Champion **Mediterranean** (1 entry): Ancona cock submitted by Kyson Cox, Foster, OK.





Junior Champion **Continental** (4 entries): Black Copper Marans hen submitted by Lily Williams, Gastonia, NC. Reserve: Black Marans pullet submitted by J Bragg.



Junior Champion **AOSB** (1 entry): Golden Phoenix cockerel submitted by Briley Hudson, Myakka City, FL.



Junior Champion **Turkeys** (2 entries): Narragansett young tom submitted by Madison Wilson from Dixon, California .

## ***EPMag Spring e-Show***

### **Junior Large Fowl Results**

Champion Large Fowl: Light Brahma pullet submitted by Khalie Franklin.

Reserve Champion: Speckled Sussex hen submitted by Jillian Skeels.





Junior Champion **MODERN** (2 entries): Brown Red pullet submitted by Correy Walton, McKinney Texas. Reserve: Blue cockerel submitted by Gemma Beasley.



Junior Champion **OEG**: Silver Duckwing hen submitted by Landon Killmon, Upland, IN. Reserve: BB Red hen submitted by Bentley Reed.



Junior Champion **SCCL** (5 entries): White Leghorn pullet submitted by Elizabeth Wilson, Dixon, California. Reserve: White Rock cockerel submitted by Quaid Dirbin.



Junior Champion **RCCL** (3 entries): Silver Laced Wyandotte hen submitted by Patriot Poultry, Zanesville, OH. Reserve: Golden Sebright hen submitted by Anthony Santos.





Junior Champion **AOCCL** (2 entries): Self Blue Ameraucana cockerel submitted by Elois E Grable, Raleigh, NC . Reserve: Dark Cornish pullet submitted by Jack Ferrell.



Junior Champion **Waterfowl** (3 entries): White Call drake submitted by Cathrynn Hager, Stamping Ground, KY . Reserve: East Indie hen submitted by L Beasley.



Junior Champion **FL** ( 12 entries): Light Brahma hen submitted by Skyler Bennet, Sarasota, FL. Reserve: D'Uccle hen submitted by Evan Donely.

## ***EPMag Spring e-Show***

### **Junior Bantam Chicken**

#### **Results**

Champion Bantam: Single Comb White Leghorn pullet submitted by Elisabeth Wilson.

Reserve Champion: Light Brahma hen submitted by Skyler Bennet.



# “Not *JUST* a Brown Duck”

By Nate Rynish

Hearing talk of “gold” can capture the attention of many. This same response often occurs to poultry enthusiasts when they see a bird that is a striking shade of golden buff. Chickens of all breeds that have buff varieties often make champion row more often than buff varieties of waterfowl. Buff (Orpington) ducks, Buff Runners, and Buff Calls are considered fawn-buff rather than golden.

Often times, in the medium

duck class, Cayugas seem to be the favorite for class champions. Cayugas are definitely beautiful and eye catching, shining like an emerald with their beetle green sheen. When comparing a bird like the iridescent Cayuga to the Buff duck, it’s not uncommon to get the response “it’s just a brown duck.” To any individual that has not yet fallen in love with the fawn buff color, prepare to be exposed to the difficulties of raising and breeding two

breeds of dusky patterned waterfowl.

Buff ducks are unique to a specific structure that is often misunderstood. Occasionally, it would appear that some breeders are attempting to make buff Pekins with massive heads and lower bill placement. They are to have a structure formulated for meat with great length in the neck and body. Both the body and breast are to be deep and broad. The head is to be oval with a medium length bill, nearly straight in line with the top of the skull. Most buff ducks shown in the United States and Canada appear to be doing well in terms



Buff female containing double copy of blue dilution





Buff drake containing double copy of blue dilution.

of broad and deep bodies, but greatly lack in length of the body and neck. The bill placement, in reference to the skull, should be more similar to a runner. As stat-

ed in the Standard, it is "nearly" straight in line with the top of the skull.

The color of Buff ducks is much more difficult to breed

than most poultry enthusiasts realize. What most breeders don't realize is that the "buff" that is referenced in the Standard is affected by brown dilution,

**Smith Poultry  
Supplies**



**Website:**

<http://www.poulttrysupplies.com/>

Email: [smithkct@centurylink.net](mailto:smithkct@centurylink.net)

***Competitive prices & fast, dependable service since 1988.***

We offer a complete line of supplies for show poultry & backyard flocks: Incubation and brooding supplies, netting, shipping boxes, medications, vaccines, blood testing supplies, vitamins, books, feeders, water jars & bases, 6 sizes of cage cups in gray, black, red, blue, purple, pink & green, & leg and wing bands, and much more.



buff dilution, and blue dilution genes. The Standard calls for drakes to have heads that are “fawn-buff to seal brown.” At today's shows many buff drakes express an acceptable bluish-grey head, but this coloration is not preferred.

- The drakes with the bluish-grey heads contain two copies of blue dilution.
- The drakes with the brown heads contain one copy of blue dilution.
- The birds with one copy of blue dilution are the desired color in Europe. The females are often referred to as “cinnamon” because the females are darker in color than the females shown in the U.S.

The blue dilution is what causes a majority of the difficulties when breeding Buff ducks. Offspring with blue overtones will be produced. Many females produced have light or blue lacing, which is often seen over the back and heading towards the tail. Males will hatch with dark, claret colored breasts that are not uniform to the rest of the body. Facial stripes become prominent when allowed into the genetic breeding pool and these undesirable stripes can be difficult to eliminate. As it is with chickens, breeders are left to select the most uniform colored birds that do not contain these faults. One other difficulty is perfecting the wing color. Wings are often more pale than the rest of the body, but when observed closely are still fawn buff.

Stories have been told of ex-



Above: Khaki Campbell Drake. Below: Buff drake containing single copy of blue dilution.





cellent buff drakes from the past. These drakes had nearly solid buff bodies, brown to buff heads, with minimal to no blue. Somewhere along the selection process the brown heads must have been disregarded. When breeding a brown headed drake (single blue) to a single blue (cinnamon) female, only a portion of the birds are going to be quality birds. 50% of the offspring will theoretically have a single blue dilution and be like their parents. 25% of the offspring will obtain two copies of blue dilution, which results in the bluish-grey head of drakes and a paler “buff” tone of the females. This variation is occasionally referred to as “blonde” and is the most commonly ob-



Khaki Campbell Female expressing the evenness in both khaki color and penciling

## Pine Hill Silkies Magnolia, MS



Find Us On Facebook  
[facebook.com/PineHillSilkies/](https://facebook.com/PineHillSilkies/)  
[PineHillSilkies@gmail.com](mailto:PineHillSilkies@gmail.com)

Exhibition Quality Silkies in White, Black, Paint, Partridge

Made with PosterMyWish.com



## Shane's Bantams

2019 Old English National Champion  
with a BB Red Cock Bird

Shane Morris (318) 447-1387



served genetic variation of Buff ducks at APA shows. Without having a way to eliminate a copy of the blue dilution, it will be difficult to produce a bird with a true seal brown head. Most breeders are trying to achieve a more accurate color for the drake by breeding out the blue/gray areas on them. These areas, as previously stated, include the head and tail in a majority of specimens. The problem that breeders do not notice is that they are washing out the bluish gray color, which is also fading the buff tone of their birds. The blue is an important part of the Buff's genetics, but needs to be bred properly in order to obtain the desired colors as stated in the Standard.

There is one more breed of recognized waterfowl that receives the comment "It's just a brown duck." Arguably the best laying duck: Khaki Campbell. Similar to the Buff duck, the Khaki Campbell is dusky patterned. The Campbells also contain the brown dilution gene, but unlike the Buff duck, do not contain a buff or blue dilution gene. A great benefit that Campbells have that develops interest is their superior laying abilities. Many judges do not understand the Campbell's standardized structure or color.

Production birds from hatcheries seem to be found more often than true, standard-bred Campbells. The eye should be set high in the head with a medium length bill that is straight in line from top of the skull. They should have long necks balancing

with a long body. Campbells are supposed to have deep, well rounded breasts and bodies. Many judges want to pick birds that are very sleek instead of birds that are deeper bodied. Most importantly, there needs to be balance amongst all these structural qualities.

Achieving a true khaki color is not as easy as one may think. Consistency of color throughout the body and through the thighs

is not a simple task. When observed closely, drakes' thighs may have more of a "gray" tone than khaki. Some birds produce white feathers around the bill, throat, or other areas of the bodies. It is rare to see a khaki female without penciling. The history of the Campbell exposes that Rouen, Mallard, and Penciled Runners were all used to create them. Those 3 breeds' female descriptions all contain

Breeder And Exhibitor Of  
**SkyBlueEgg**  
Araucana  
Multiple National Champion Araucanas

Breeding Araucana toward the  
Standard of Perfection since 2004.  
**LARGE FOWL ARAUCANA**  
IN ALL APA APPROVED VARIETIES  
Plus A Few Bantams  
Member:  
Araucana Breeders & Exhibitors Club  
(<http://www.abec.us>)

Ann Charles - Winnfield, Louisiana  
[SKYBLUEEGG.com](http://SKYBLUEEGG.com)  
[Araucana.com](http://Araucana.com)  
Email: [Contact@skyblueegg.com](mailto:Contact@skyblueegg.com)  
(318) 209-9802 (LVMsg)



penciling. Yet, the standard calls for an even shade of khaki preferred. Penciling and lacing are acceptable, but less is better. The penciling and lacing becomes more acceptable when it is even throughout the entire body. The penciling makes achieving an even khaki color all the more difficult. To some, the khaki Campbell and the Buff

(Orpington) duck are nothing but a brown duck. Both breeds are true to their own shape and structure. Although there are difficulties, the result can be very rewarding. The color pattern may seem simple, but the reality is that there are many difficulties associated with breeding these two beautiful varieties. They are not *JUST* brown ducks.

**Worth a reminder -**

## It's that time of year again . . .

"Black flies are tiny, blood-sucking flies often called buffalo gnats or turkey gnats. They usually breed in fast moving water of streams and rivers. They are tremendous pests of humans, domestic animals, and may be encountered from March to June.

"Buffalo gnats can kill chickens and livestock by nuisance effects alone. Chickens have been reported to die of suffocation after buffalo gnats clogged the birds' respiratory tracts. Buffalo gnats may transmit various diseases, including leucocytozoonosis, a disease of turkeys, geese, ducks, and sometimes chickens.

"Fortunately, buffalo gnats are daytime biters and rarely venture indoors. So one thing you can do is go inside if the gnats are biting. Providing shelters for poultry may help, since the flies don't like enclosures.

"There are animal products labeled for mosquito and biting fly control that you can apply directly to chickens. Many of these products contain the active ingredient permethrin and may also be used directly on poultry.

Buffalo gnats generally only live 4 to 5 weeks and should go away in hot summer. 85 degrees and above kills them.

For more on Buffalo Gnats go to: <http://extension.msstate.edu/>

**MEMBERSHIP ONLY \$8**

**YOUTH EXHIBITION POULTRY ASSOCIATION Y.E.P.A.**

**YEPA YOUTH EXHIBITION POULTRY ASSN.**

**"BETTER POULTRY THROUGH EDUCATION"**

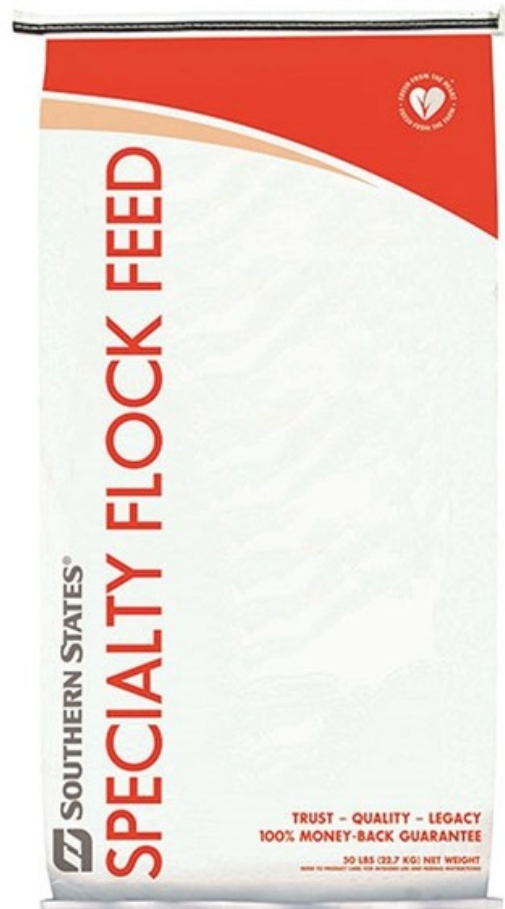
YOUTH EXHIBITION POULTRY ASSOCIATION 810 SWEETWATER RD. PHILADELPHIA, TN 37846  
[HTTP://YOUTHEXHIBITIONPOULTRY.ORG/](http://YOUTHEXHIBITIONPOULTRY.ORG/)





**SOUTHERN STATES ALL GRAIN LAYER & BREEDER PELLET**

A complete vegetarian feed that is ideal for egg layers and breeders 16 weeks of age and up. The nutrient dense, all-natural formulation results in eggs produced with higher levels of vitamins, minerals, and omega 3 content, and superior egg shell and yolk quality. The added probiotic optimizes feed digestion. Southern States All Grain Layer & Breeder is free of antibiotics, animal proteins and animal



**SOUTHERN STATES SUPER BREEDER  
50 LB BAG**

Southern States Super Breeder is a complete poultry breeder and layer feed for all your egg producing birds. From broilers to turkeys, gamebirds to emus, Southern States Super Breeder gives you healthy birds and healthy eggs. PrimaLac for good gut microbials and 21% crude protein for excellent muscle development and beau-

**<https://www.southernstates.com>**





**Bolster your chicks from the inside out.**



NatureWise® Chick Starter offers a premium source of nutrition, uniquely made with FlockShield™ healthy flock support. It aids nutrient absorption while helping support your chicks' immune systems.

Find a NatureWise retailer near you  
at [NUTRENAPOULTRYFEED.COM](http://NUTRENAPOULTRYFEED.COM).

 **Nutrena®**  
What's inside counts.

© 2020 Cargill, Incorporated. All rights reserved.





### ALL SHOWS:

Large Fowl, Bantams, Waterfowl, Geese and Turkeys  
Open and Junior Divisions  
Sanctioned with the APA, ABA, NAWA and ALFA



[www.poultryshowcase.com](http://www.poultryshowcase.com)

<https://www.facebook.com/OklahomaPoultryShows/>

# 2020 POULTRY SHOW LINEUP

*Feb. 1, 2020*

CVPC State Championship

Norman, OK

Large Fowl, Bantams, Waterfowl, Geese, ALFA State Championships and Serama Show. Open and Junior Divisions. Showmanship, Junior Contests and much more. APA, ABA, NAWA and SCNA Serama Sanctioned shows.

*June 6, 2020*

Canadian Valley Junior Prospect Show, Norman, OK  
and Junior Large Fowl and Bantam Show along with Open ALFA show.

*Nov. 7, 2020*

MEGA SHOW, Norman, OK

Open & Junior Large Fowl, Bantams, Turkeys, Waterfowl, Geese, ALFA Show and SCNA Sanctioned Serama Show. Huge awards and premiums. NAWA North American Waterfowl Association Grand Nationals, Showmanship and Junior Events. 2nd Annual Breeder's Cup Show Bird Invitational Auction.

*Nov. 28, 2020*

Heart of America Mini MEGA Show, Hutchinson, KS

Large Fowl and Bantam and Open & Junior Divisions for Large Fowl, Bantams, Waterfowl, Geese, Turkeys and Guineas. APA, ABA, ALFA and NAWA Sanctioned.

*Dec. 12, 2020*

CVJPC Open and Junior Show, Norman, OK

Large Fowl, Bantams, Waterfowl, Geese and Serama show.



*FDW Graphic Design*