

Exhibition Poultry®

The #1 Internet Source For Information On Showing & Breeding Exhibition Poultry

Volume 5, Number 12 • <http://www.ExhibitionPoultry.net> • December 2014

On the cover . . . The North Louisiana Poultry Club, honored long time president, Jerry McCarty, pictured with his wife Jean. See details on page 13.



Cover photo by John Ackel

Exhibition Poultry Magazine®

Table of Contents

Upcoming APA/ABA Shows	02
APA/ABA Judges List	03
APA News	04
Poultry Breed Clubs	04
ABA Happenings.	05
Produce Quality Eggs.	06
Mississippi State Fair Results	06
Silver Phenotypes - Reeder.	10
SE-ARK Fair Results	12
Haynesville LA Show Results	13
Display Ad Rates	16

Advertiser's Index

American Poultry Association	04
Natl. Call Breeders of America.	04
M & J Farms	04
M & J Farms	04
American Bantam Association	05
North Louisiana Poultry Club	06
Poultry Show Central	06
Southwood Graphics	07
SkyBlueEgg Araucana	07
Smith Poultry Supplies	08
APA/ABA Youth Poultry Club	08
Cackle Hatchery	09
Fowl Play Products, Inc..	09
Araucana Breeders & Exhibitors Club	09
Brian Reeder	12



On the cover . . . The North Louisiana Poultry Club, honored long time president, Jerry McCarty, pictured with his wife Jean. See details on page 13.

Exhibition Poultry Magazine®

Advertising Rates and Deadline

Ad Deadline is the 24th of each month.

Please include an email address if you would like a proof of your ad before publication.

Columns are 2 1/2' wide. This is the size of a \$6.25 1 column inch display ad.

Display Ads

Display ads are \$6.25 per column inch. Please include an email address if you would like a proof of your ad.

Exhibition Poultry Magazine®

P.O. Box 1027, Winnfield, LA 71483

<http://www.ExhibitionPoultry.net>

Ann Charles
Editor/Publisher

email: contact@SkyBlueEgg.com

Phone: (318) 209-9802

Andrew S. Charles
Technical Support

email: admin@ExhibitionPoultry.net

Exhibition Poultry Magazine® publishes upcoming show listings and show results from the South Central states (TX, AR, LA, MS, OK) plus those results supplied by our paid advertisers. *We reserve the right to refuse any advertisement or article that is deemed to be of inappropriate content by the Managing Editor of this Publication.

Upcoming APA & ABA Shows

LA - AR - OK - TX - MS

December 2014

December 6, 2014

Atoka, Oklahoma - 2013 Southeast Bantam Game Show - Double Show - hosted by The Atoka Bantam Club. Greg Garison 580-889-0621.

December 6-7, 2014

Knoxville, Tennessee, the [2014 APA National Show](#), hosted by Tennessee Valley Poultry Club. Website: <http://tnvpoultryclub.com>

December 13, 2014

Shawnee, Oklahoma. Oklahoma State Poultry Federation 97th Annual Show. Website: <http://www.okspf.com/> One day show.

January 2015

January 10, 2015

College Station, Texas, the Blue Bonnet Classic, hosted by the Brazo Valley Poultry Club. Contact: Claudia Choate, 512-273-2010. Claudia@bluebonnetclassic.com,

January 24-25, 2015

Fort Worth, Texas, Southwestern Exposition & Livestock Show. Contact: 817-877-2400. website: <http://www.fwssr.com/>

January 24, 2015

Columbia, Mississippi, Pearl River Classic. Double Show, Columbia Expo Center. Judges: Steven Beaty, NM and Anthony Ashley, SC. <https://www.pearlriverclassic.com/>

February 2015

February 7th, 2015

Norman, Oklahoma

Canadian Valley Spring Show, Cleveland County Fairgrounds - Large Fowl, Bantams, Waterfowl, Turkeys. <http://www.poultryshowcase.com/>

February 21, 2014 - (Not confirmed)

Newcastle, Oklahoma, The Great Plains Game Bantam Spectacular. One day-double show. Contact: Andy Barnes, 580-439-5956, ouchickencrazy@pdi.net; RR 2 Box 450, Comanche, OK, 73529.

March 2015

March 7, 2015 - (Not confirmed)

Pryor, Oklahoma, Mayes County Fairgrounds. NorthEast Oklahoma Poultry Show, ABA sanc-

tioned - bantam only. Contact: Kenneth Kvittum (918) 476-5613.

March 7, 2015 - (Not confirmed)

Rison, Arkansas, Cleveland County Fairgrounds. Contact: Frankie Harper, PO Box 552, Rison, AR 71665; Phone: (870) 370-3427

March 7, 2015 - (Not confirmed)

Lagrange, TX, South Texas Classic, Fayette County Fairgrounds. Contact: Danny Hughes, P.O. Box 251, Garwood, TX 77442; Phone: 979-758-3471

March 21, 2015

Dripping Springs, Texas, Dripping Springs Ranch Park. 7th Annual Fancy Feathers Open Poultry Show. Contact: Jaci Kroupa, fresheggs91@yahoo.com; website: <http://www.fancyfeatherstx.org>

March 4-23, 2015

Houston, Texas, Houston Livestock Show & Rodeo. Contact: 832-667-1000 Website: <http://rodeohouston.com/>

March 22, 2015 - (Not confirmed)

Alexandria, Louisiana, LSU Ag Center. Central Louisiana Poultry Club Spring Show. For more information, contact: Maddi Williams, 940-736-9491 MaddiWilliams@yahoo.com, email: clpoultryclub@yahoo.com, website: <http://clpoultryclub.wix.com/mainpage>

March 28, 2015 - CONFIRMED

Beaumont, Texas, South Texas State Fair. Contact: Phone (409) 832-9991, Email: info@ymbi.org, Website: <http://www.ymbi.org>

April 2015

April 4, 2014

El Dorado, Arkansas, Fairgrounds. South Central Regional Classic. Contact: Frankie Harper, PO Box 552, Rison, AR 71665; Phone: (870) 370-3427

April 4, 2014

Norman, Oklahoma, Canadian Valley Poultry Club spring show. Website: <http://www.poultryshowcase.com/>. Contact: Richard Peters, PO Box 735, Noble, OK 73068 APAJudge1009@aol.com

April 11-12, 2014

Hutchinson, KS

2014 APASEMI-ANNUAL MEET.

Contact: Danny Williamson Email: brahmabrahma@hotmail.com

May 2015

May 2, 2014

Little Rock, Arkansas, Arkansas State Fair Spring Show, Arkansas State Fair grounds. Entries at: <http://arkansasstatefair.com/livestockindex/Springfair.html>

September 2015

September 4-13

Abeline, Texas, West Texas Fair and Rodeo. Contact: 325-677-4376. Website: http://www.taylorcountyexpocenter.com/taylorexpo_wtfr.html

September 5-13, 2014

Odessa, Texas, Permian Basin Fair & Exposition. Contact: Jerry Wiley, P O Box 212, Gardendale, Tx 79758. Phone: 432-366-3026 Website: <http://permianbasinfair.com/index.html>

September 13-14, 2014

Deatur, Texas, Amarillo Bantam Club Show, Contact: Al Walker, 900 Country Rd. 36130, Honey Grove, TX 75446. 903-739-8225 or 903-815-8255.

SOUTH CENTRAL APA & ABA JUDGES

One-year listing, bold, and underlined, with details just \$12.

ARKANSAS

Jacob Bates 614 N. Hancock St., Charleston, AR 72933 479/965-5222.

LOUISIANA

JIM CRAIN, APA General Lic #1184, ABA General Lic #344, Bantam Duck #157, Serama #26. Phone: 318-455-998, email: craijac@gmail.com, 160 Pelican Cove, Homer, La. 71040 (03-14)

Jerry McCarty 513 McKinley St., Haughton, LA 71037 318/949-0027.

OKLAHOMA

L. C. "Corky" Higbee 6100 Cemetery Road, Noble, OK 73068-8604 405/872-7504.

Richard Peters P.O. Box 735, Noble, OK 73068 405/527-8513.

Robert D. Murray 920 S.E. 21st Street, Oklahoma City, OK 73129 405/632-7085.

TEXAS

SAMUEL BRUSH, 1009 Hillview Drive, Keller, TX 76248-4012, slbrush@verizon.net, 817.379.6475, APA General License. (12-14)

TROY JONES, 7004 Apache, Fort Worth, TX 76135, 817-237-3797, ABA General Bantam (#107) and Bantam Euck (#72) Licensed. (01-15)

James Cooper 1111 Woodbine Street, Kemp, TX 75143 903/498-7168.

Monty Fitzgerald, 1713 CR 4280, Decatur, TX 76234; 940-393-8907

Come to Florida!

The 2015

"Orange Blossom Special"

Double-Points Poultry Show.

Saturday, March 7th, 2015.

Citrus County Fairgrounds,

Inverness, Florida.



For more information visit our website:

<http://www.cflpoultrybreeders.org/>

Or call (321) 236-1080

Hope to see you there!

Tracy Hill 10721 Truman Street, Amarillo, TX 79118; 806/622-2488.

Melody Jonas 436 CR 3605, Lampasas, TX 76550-9711; 512/556-2800.

Dwayne Jonas 436 CR 3605, Lampasas, TX 76550-9711; 512/556-2800.

STEVE JONES, 9677 Butler Lane, Poetry, TX 75160, ghia4me@sprynet.com, 972-636-9093, APA/ABA General License. (12-14)

Charles Mahoney 11312 Earlywood Drive, Dallas, TX 75218; 214/324-3911.

PAT MALONE, 4903 Brazowood Circle, Arlington, TX 76017, 817.478.2397, PatMalone@pleasantridgechurch.org. APA General License, Bantam Chicken & Bantam Duck (12-14)

Jeff Maxwell Jr. 5230 Abercreek, Friendswood, TX 77546 409/258-5662.

Joe H. Osburn 296 CR 4896, Boyd, TX 76023 817/220-6261.

ADDITIONAL STATES

JEFF HALBACH, 31601 High Dr. Burlington, WI 53105. jeff.halbach@tds.net, 262-534-6994. APA General & ABA General and Bantam Duck. (12-14)

DWIGHT MADSEN, ABA Bantam License #349, Duck #161. ABA District 11 Director. 17402 Locust Rd., Carthage, MO 64836. Email: doit85@hotmail.com, Phone: (417) 359-3867. (05-15)



APANEWS November 2014

It's hard to believe, but 2014 is almost over and I am starting to think about next year. I would like to remind all clubs that if you would like to have a state or district meet, please get your request in to your director soon so I can start sending out the proper reports and awards. Don't forget to be sure to follow the procedure for judges, if you have a judge who isn't an APA member your report will not be processed.

As we are beginning a new year if your club changes officers, please let the office know if the contact information changes for the APA.

Dues notices are in the mail for anyone whose dues expire on January 1. Please note, if your dues are due in January and you have not renewed by July 1, you will be put on an inactive list and all your points will be voided.

I am working on the corrections for the 2014 yearbook and will publish them in the News & Views that will be sent in January. I am sorry for the problems that occurred, but will correct them to the best of my ability.

Speaking of News & Views, I would like to have more input from members, any time you can put together an article or short write up, just send them to me. We are still trying to make our classified ad section larger, it is an inexpensive way to keep your name in front of everyone.

Dick and I were able to attend the 100th anniversary of the ABA held at Columbus in November and I must say it was quite a success, it's great to see that many birds at one show. I talked with people from all over the country and Canada and the APA had a very successful financial weekend.

As you read this, I am packing to go to the APA Annual in Knoxville the first weekend of December.

The Tennessee Valley people have worked hard to put together a great show, hope to see you there.

The Directors meeting will be held on Friday evening and I will post time and directions for the APA General meeting at the show. I will be offering some Christmas spe-

cial at the show including the Limited Edition 2010 Standard for \$100. These will be show specials only and not available for shipping. We have also added a blue hoodie to the merchandise line and have a limited edition poster for sale honoring the 2014 APA Annual. The poster was designed by Ruth Caron of Texas and it is very well done.

Dick and I wish everyone a Merry Christmas and Happy New Year.

Pat Horstman,
Secty.



BREED CLUBS

*Basic one-year listing
(3-4 lines) - just \$12*

Araucana Club Of America, Promoting the tufted, rumpless, blue egg laying Araucana. \$20.00 annual dues includes quarterly newsletter, breeders guide, and Araucana Handbook. Mail inquiries to: Araucana Club of America, 207 Pickens Drive, Pendleton, South Carolina 29670. Email: secretary@araucana.net. Visit our website and forum: www.araucana.net (12-14)

Modern Game Bantam Club of America, Dues: \$20/year. Mailing address is 4134 NY Highway 43, Wynantskill, NY 12198; Lee A. Traver, Sec./Treasurer. Email: traverfarm@wildblue.net; Website is www.mgbca.org. (12-14)

National Call Breeders of America: <http://www.callducks.org>, Secretary: Dennis Fuller, email: wapsiwaterfowl@aol.com, 319-334-3497, Mail Memberships to: NCBA c/o Steve Jones, 9677 Butler Lane, Poetry, TX 75160 (12-14)



AMERICAN POULTRY ASSOCIATION

Website: <http://www.amerpoultryassn.com>

Contact: APA Secretary
PO Box 306, Burgettstown, PA 15021
Phone: 724-729-3459
Email: secretaryapa@yahoo.com






JOIN NOW

Individual Membership:
\$20 per year / \$50 for 3 years
Outside USA & Canada: \$40 per year

Junior Membership:
\$15 per year / \$40 for 3 years



ABA HAPPENINGS

December 2014

Hello Bantam lovers – the 100th Anniversary show is part of history. In this article, I am going to share some feedback on this historic show. So many people had so much to say and feel regarding this show and I want to share some of that with you. The single word that comes to my mind is “Marvelous”! From soup to nuts, it was a show that really delivered the spirit of what we are all about. I have heard only great things about the show and hope we can put on this type of show again, sooner than another 100 years. It was especially gratifying to see so many of our ABA members at the table and even more former members re-joining the ABA. What a day – What a weekend.

I would like to especially thank the Ohio Poultry Breeders. With their hard work and vision, we were able to make this happen. The venue, organizational skill, and endless support from OPBA since the inception of the Centennial Show several years ago all came together on this weekend.

The amount of man (and lady) hours, over the past year, is conservatively estimated at 3,810 and it showed. The attention to detail at this show was top notch! I could go on and on about details and how Rose Stough made the ABA legbands the talk of the show by creating fashion statements where everyone wanted to wear a legband and we are not talking about the chickens.

Well done Rose – we are forever in awe of your creativity!!

The Centennial Standard made its debut here and we are very proud of this project. A special thank you goes to Clell Agler as chairman of the Centennial Committee and Neil Grassbaugh for his hours and hours of photographic detail. The entire centennial committee and standard committee have a lot to be proud of and we are looking forward to expanding the color section and to adding more pictures to the book; hats off gentlemen for a project well done.

Also – I am very excited to report that because of the generosity of Shawn Streeter of MA, the ABA has its first official Life Member from Alaska. Yes the top winner in the Senior Level Showmanship was won by Shannyn Bird of Fairbanks, Alaska and we are

happy to have her as the single Alaskan ABA Life member at this time. Congratulations Shannyn!

My husband Kevin shared his view on the show and I would like to share parts of it with you here. Thursday Afternoon, Columbus Ohio: The show hall was abuzz with final preparations for the following morning. Everyone was anticipating being a part of history at the largest single National Poultry Show ever! The ABA table was being set up, final preparations were being made, banners hung, books, shirts, hats, new merchandise was being counted and set out. And behind the table there it was ... the pallet of the long awaited 100th Anniversary 2014 Standard!

All 275 of the books neatly stacked. Everyone wondering how fast they would sell? Would they sell? Did we have enough? Did we bring too many?

Friday Morning 8 AM, Columbus Ohio: The first 2014 Anniversary bantam standard was sold and 3 days later on Sunday Afternoon at 10:00AM the final of the 275 standards was sold!

What happened in those three days has never been experienced in the past. The activity and amount of sales surpassed any other show in the history of the American Bantam Association. Members, Non-members, Judges, Exhibitors, Adults, Children... Many visited the ABA table in a constant steady stream sometimes forming lines up to 7-10 deep to get a look at the new standard in addition to all the other goodies....They all just had to be a part of this poultry party!

This was an incredible and exhausting show, as once the flow of people began; it

just never stopped for all three days. But this, as incredible as it was, wasn't just about the sales volume it was also about the people that came and talked and asked questions, and shared their stories.

Besides Karen and Kevin Unrath behind the desk, Matt Lhamon “worked the table” and played an almost immeasurable part of the success of the day. As President, he represented the association with a professional, friendly and knowledgeable approach that only resulted in the members being even more dedicated and excited to be a part of the day. Rick Hare worked side by side with everyone at the table, lent his expertise and enthusiasm to members, rolled up his sleeves and sold, and helped and helped some more!

Others that worked hard and contributed to the success at the ABA table were Tommy Lee, Wil Diaz, Bonnie Saltee, Kathy and Emily Lhamon, students from U of Arkansas... and of course Russell Crevoiserat who does so many things that cannot even be counted, including organizing and running the entire silent and live auction for the 3 days! It was a flurry of nonstop activity....Anyone that was not specifically mentioned we “Thank You” also for your efforts.

What we came to realize was the importance of the directors, officers, and volunteers of the Association. Without your time and energy, the ABA would not be the organization it is today.

What a show ... what a weekend... what a Team!!

Other quotes: “what would the previous ABA secretary's thought if they saw what was happening at Columbus? It was certainly stunning and I doubt anyone really could have

The American Bantam Association

The ABA Keeps You Connected

Come Join your Fellow Bantam Lovers!

New Member Special JUST \$50




You'll Receive...

- ✓ 1 Year membership
- ✓ Copy of the Annual Yearbook
- ✓ 2011 Bantam Standard Book
- ✓ 4 Informative newsletters per year
- ✓ Premium awards system

Join Today at www.bantamclub.com


or send check or money order to:

ABA
PO Box 127 • Augusta, NJ 07822
bantamclub@gmail.com



Information
Education
Recognition

We work hard at the little things in life!



seen everything there was to see because the event was so big in all respects”.....“ As anticipated as the new standard was, the sell out of the new standards generated less than half of the total revenues at the ABA table!! The greater half came from the sale of breed books, clothing, assorted merchandise, the silent and live auctions, and, of course, seemingly countless new memberships.....” “....Spontaneous acts of kindness were also witnessed - especially so when one fancier donated \$100 to be used for five kids who approached the table to join the ABA. Each of the five, although willing to pay their own way, got a free membership because of another members' thoughtful gift....” RC

From Showbirdbid probboards: “ Why isn't anyone talking about this yet? They said that it would be worth the wait, and they were right. What a wonderful job! A thousand thank yous to everyone who had a hand in working on this. It is something that I am proud to show to anyone outside the fancy to give them an insight into what we're all about, to combat the image that we are just a bunch of unsophisticated hicks playing with chickens. The entire book exudes class and quality, from the wonderful new cover design to the substantial binding and construction materials. Some nice touches include updated origin and status information, and black and white illustrations for every breed. There is a nice mix of some of the classic prints with some of the very well done newer illustrations. And the photos, Neil's glorious photos! Even small details like using landscape orientation to better highlight the horizontal carriage of the Call ducks have not been overlooked. Further testament to the wisdom and practicality of the ABA is that they chose to save resources by not including color in the new pocket version. Spend the money for the fancy version and enjoy it at home in your armchair. Use the smaller one to carry with you to study, or at shows. With any work of this scope there are bound to be a few hiccups, but if history is any indication, these will be quickly corrected with subsequent printings. ABA, demonstrating time and again that my membership fees are money well spent....” PV

So this is a synopsis of the ABA's 100th Anniversary Show and some feedback on the 100th Anniversary Bantam Standard. We are back in NJ, working hard to keep things moving in the right direction for the ABA. The new Standard is now available on our website www.bantamclub.com cost if \$45 with the mini (non color) version at \$20.00.

The 2015 legbands should be available soon. Check our website for updates.

Thanks to everyone for a very special weekend and also thanks for your patience while we dig out of this wonderful rubble.

Karen Unrath, ABA Secretary

3 Tips To Help Your Hens Produce Quality Eggs

Focus on hen nutrition and management to help your flock best produce eggs for your family. Raising a backyard flock should be fun. You provide your hens shelter, care and quality feeds. They provide you nutritious eggs and undeniable companionship. But what's best for your flock and how can you help them produce the best eggs for your family?

Dr. Mikelle Roeder, a flock nutrition expert for Purina Animal Nutrition, says a quality hen care plan should include a thought-out management strategy and a complete nutrition program.

Here are three of Dr. Roeder's tips for a successful laying season.

1. Provide at least 90 percent of the diet through a complete high-quality layer feed, starting at 18 weeks of age.

“Laying eggs is a full-time job for our hens, so we need to provide them the nutrients they need to be most successful,” says Roeder. “The number one tool we can give them is a complete and balanced diet when they begin to lay eggs around 18 weeks of age. Hens can produce more nutritious eggs when fed a premium feed, so feeding them well can result in better nutrition for both them and your family.”

Complete layer feeds are formulated to include all of the nutrients hens require while laying eggs. The diet should include: calcium for strong shells; amino acids, vitamins and minerals for enhanced egg quality and hen health; and probiotics, prebiotics and yeast

to promote the hen's digestive function.

The complete layer feed should comprise at least 90 percent of the hen's diet. The remaining 10 percent can come from supplemental feeds, such as scratch grains, good quality table scraps and oyster shells.

“We don't want to feed too much ‘extra’ feed, like scratch grains or table scraps, because it can dilute and unbalance the complete nutrition in the hen's pellets or crumbles, affecting her production and health,” Roeder says.

2. Prevent shell cracks by gathering eggs 2-3 times per day.

Once hens begin laying eggs, be sure to gather eggs at least in the morning and in the evening. This helps to keep the eggs cleaner and reduces chances for eggs to get cracked by hen traffic in the nests.

“Egg cracks can allow bacteria access to the interior of the egg,” says Roeder, explaining that not all shell cracks are visible to the naked eye. “Microscopic cracks and large cracks can be a result of an inadequate diet and infrequent egg gathering. We've found that feeding a complete layer feed can improve shell strength, helping to address microscopic shell cracks and keeping bacteria from entering the egg.”

“Gather eggs 2-3 times per day,” Roeder advises. “This helps prevent eggs from getting stepped on and thereby cracked or broken, which can lead to egg eating. Egg eating generally occurs when a hen finds a broken egg, tastes it, likes it and begins searching for other broken eggs, then learns to break them herself. Address egg eating by feeding our hens for strong shells and gathering eggs frequently.”



PoultryShowCentral.com

The source for all your “fancy” poultry information

- Find poultry shows -over 400 shows listed!
- Find poultry swap meets & auctions.
- Show-quality Breeder Directory, organized by breed—create your FREE listing!

Ad Design • Logo Creation • High Quality Business Cards • Web Site Design - Publishing & Hosting
 Sthwoodg@yahoo.com (318) 413-4109



SkyBlueEgg

**SkyBlueEgg.com
& Araucana.com**

Large Fowl Araucana in Black, Black Breasted Red, Golden Duckwing, Silver Duckwing, White, plus a few bantams.

**Started Araucana chicks
available year-round.**

Ann Charles

Winnfield, Louisiana

email: contact@SkyBlueEgg.com

phone: (318) 209-9802 (lv msg)

Breeder of . . . APA National Champion LF Araucana in 2013 and 2010. Also, APA Res. National Champion Araucana 2009 (LF) and 2008 (B).

3. Provide light for at least 17 hours per day.

Light is a critical ingredient in egg laying. One primary reason hens may stop laying eggs is decreasing day length.

"Hens need a minimum of 17 hours of daylight to sustain strong production," Roeder says. "Without supplemental light, they will naturally stop laying eggs when daylight drops below 12 hours per day due to a hormonal response in the hen that is triggered by light."

To address this problematic hormonal response and promote long-term egg production, provide one incandescent 40-watt or LED 9 to 13-watt bulb (brighter light is neither necessary nor advantageous) per 100 square feet of coop space. Use an automatic timer to keep light and dark hours consistent so hens stay on a laying and sleeping schedule.

"As with nutrition and management, consistency is key when providing light to our hens," Roeder says. "Just a day or two of change in any of these factors can hinder egg production."

To learn more flock nutrition and management tips, visit www.purinamills.com/chicken-feed or like Purina Poultry on Facebook.



National Call Breeders of America

A club formed for the promotion of breeding and exhibition of Call Ducks, offering National, District and Special Meets. Quarterly newsletters and annual year-book.

Memberships: Junior (under 16) \$8/year; Individual \$15/year or \$29/2 years; Family \$17/year or \$33/2 years; Lifetime membership \$200. Visit our website at www.callducks.org to join online or purchase club merchandise, such as t-shirts, pins, patches, posters, etc.

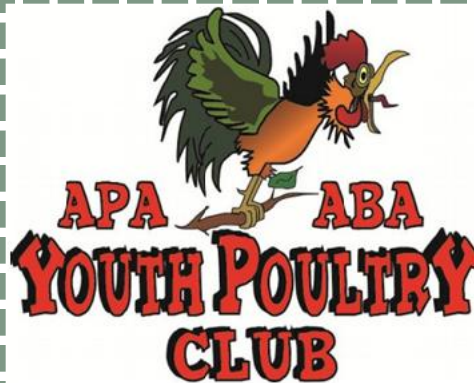
For more information contact secretary Dennis Fuller, 1729 Otterville Blvd., Independence, Iowa 50644; 319-334-3497, wapsiwaterfowl@aol.com

(12-15)

SELL YOUR EXCESS BIRDS HERE

This is 2 columns by 3.5 inches. There are no extra charges for a color picture or simple ad design. Win ads, poultry for sale, upcoming shows, breed clubs, and all commercial advertising is welcomed. This size ad with a color picture is just **\$43.75** for one run.

Special One-Year Packages: Any ad run for a full year, with only minor text changes throughout the year, PRE-PAID in full, is 50% off the single insertion rate. *Example:* An ad this size, run for one year (12 issues) is only **\$262** (1/2 the regular price).



The club promotes opportunities to practice showmanship, cooperation and fellowship and to be involved with their home community and with the poultry fancy in general.

For more info go to: <http://www.apa-abayouthpoultryclub.org>
or contact: Doris Robinson, National Director, 810 Sweetwater Rd., Philadelphia, TN 37846 ~ Phone: 865-717-6270 ~
Email: nanamamabrahma@att.net



Smith Poultry & Game Bird Supplies

14000 W. 215th Street, Bucyrus, KS 66013
Ph. 913-879-2587 7:30 A. M. - 3 P. M. CST M-F
24-hour Fax: 913-533-2497
Email: smithct@centurylink.cnet
Web www.poulttrysupplies.com

Our family-owned company has offered competitive prices & given fast, dependable service to our customers since 1988. 40-page color catalog contains many items: bands, books, brooders, catch nets, coops, feeders, founts, incubators, medications, netting, pullorum antigen, Tek-Trol & Oxine disinfectants, vaccines, vitamins, etc. Call us & we'll deliver your order to the shows & swaps we attend in 2013.

The Chicken Swing



Fowl Play
PRODUCTS LLC
...improving coop life
www.FowlPlayProducts.com Phone: (573)864-0096



Hatching and Shipping Since 1936

- Egglayers
- Rare Breed Chicks
- Meat Birds
- Ducks
- Geese
- Turkeys
- Bantams
- Guineas
- Game Birds

Free Color Catalog

Cackle Hatchery

P.O. Box 529

Lebanon, MO 65536

417-532-4581

www.cacklehatchery.com

Deadline for advertising and article submission for the December issue is Monday, November 24th.

Araucana Breeders & Exhibitors Club

"Breed Improvement Through Exhibition"

BEC is committed to breed improvement through exhibition of the Araucana breed as defined by the APA's Standard of Perfection and the ABA's Bantam Standard.



Congratulations to all exhibitors on an outstanding 2014 ABEC National at Knoxville, TN. Plus, a huge thank you to everyone with the Tennessee Valley Poultry Club.

Don't forget to nominate your 2014 hatched Araucana by December 31st to make them eligible for the 2015 ABEC Araucana Maturity! Look for full ABEC National Show and ABEC Futurity results in the next issue.

ABEC Club Officers:

President: Ann Charles, Winnfield, Louisiana, email: president@abec.us

Vice President: Cindy Mansell, Waterloo, New York, email: vp@abec.us

Secretary/Treasurer: Amanda Cambre, Bush, Louisiana, email: secretary@abec.us

Visit us at our website: <http://www.ABEC.us>

2015 ABEC Maturity nomination deadline is 12/31/2014!
~ ABEC.us ~

The Genetic Factors of Silver Phenotypes

By Brian Reeder

What does it take to make a red variety into a silver variety? Most people will simply answer that the sex-linked pheomelanin gene Silver (S) is all it takes, but this is not the case. In fact, getting to a good, clean “white” silver phenotype is much more complicated than simply adding the Silver sex-linked pheomelanin allele to the s-locus. For the last twenty years, I have been working toward understanding the differences in silver and red phenotypes. In that time, I have made hundreds of test matings and raised literally thousands of birds, and with each of those matings, I have gathered data on the segregations of the silver and red phenotypes, in addition to any other data I may have been gathering. By working with such large numbers, I have been able to, first, form a series of hypothesis about the various factors involved in these phenotypes, and second, to test those hypotheses repeatedly and within many different genetic populations, polishing them as more data emerged. Through all that work I have come to a good working understanding of the various heritable factors (genes) involved in these phenotypes.

In the April 2011 issue of Exhibition Poultry, I wrote an article titled Pigmentation of the Red Jungle Fowl. That article is the precursor to this article, and I would recommend that anyone seriously interested in this article should download the April 2011 issue of this magazine from the website and read over that article as a companion to this one. I will be using my original artwork from that article to illustrate the progression of genes that make the final, fully clean white silver phenotype. I will also be using the MC1R gene, that we call duckwing in the hobby and notate as the e-locus allele e^+ , as the main base to illustrate this progression from red to silver phenotypes. However, this information does not only apply to the e-allele e^+ . The exact same heritable factors I will be discussing herein on e^+ are used on all the e-alleles to go from the red versions to the clean white silver versions. In time, I will discuss the interactions of these factors on all of the e-alleles, but for the interest of brevity in this article, I will only be using

e^+ in the examples. The important thing to keep in mind when applying this information to e-alleles other than e^+ is that each e-allele distributes the pigments (eumelanin, Sex-linked pheomelanin and Autosomal pheomelanin) in its own unique manner, and more so in the females than the males.

To begin, let us have a quick reminder of the pigment makeup of the red duckwing, as seen in the red jungle fowl and varieties of domestic fowl similar to it, which I call red duckwing and is commonly referred to in the hobby as black breasted red (image 1). This variety includes eumelanin, the red form of sex-linked pheomelanin (s^+), autosomal pheomelanin (Aph), mahogany (Mh) and usually includes dilute (Di). However, the presence or absence of Mh and Di do not change the phenotype from red and these are simply additive genes that create different shades of red/orange.

In both sexes, Autosomal pheomelanin is the base pigment that lies underneath the other pigments. In the male red duckwing, the body is eumelanin, while the hackle, saddle and main wing triangle are predominantly sex-linked pheomelanin while the shoulder and top of the head show the greatest saturation of Autosomal pheomelanin and also Mahogany (as Mh requires the presence of Aph to express visually – Aph serving as the platform upon which Mh saturates). In the female red duckwing, the breast expresses Autosomal pheomelanin while the back, shoulder, wing, cushion, tail secondaries and sides of the body are a complicated layering/blending of Autosomal pheomelanin, sex-linked pheomelanin and eumelanin. The hackle is mainly sex-linked pheomelanin with a eumelanin stripe in each feather, while Autosomal pheomelanin is predominant at the top of the head and around the outer edge of the hackles. For more on this red phenotype, refer back to my April 2011 Exhibition Poultry article mentioned above.

So now, if we simply add the sex-linked silver gene to the red duckwing, what does the phenotype become? To begin with, it does not become an exhibition silver duckwing. The female can only have one dose of this z-chromosome, sex-linked gene, while the male can have one or two doses. (We will only be discussing the homozygous silver

males (S/S) here in all of these examples. The heterozygote males (S/ s^+) are visually very confusing and can appear similar to any of these phenotypes we will be discussing. Since they are not true-breeding phenotypes, they are irrelevant to this discussion). In the male, the addition of homozygous Silver (S/S) to the red duckwing creates a phenotype that would be referred to as “gold” in the hobby (image 2). The homozygous Silver changes the hackle, saddle and wing triangle to a yellow/gold color, as Aph is still present and underlies all the sex-linked pheomelanin areas, so that when the Silver gene removes the sex-linked pheomelanin the Autosomal pheomelanin is still there and is visible as the golden hue. If mahogany is present, it is also not affected by the sex-linked silver gene and will still be seen on all of the usual areas of expression and will make the tone of the gold in the sex-linked pheomelanin areas somewhat darker than if mahogany is not present. In the case where mahogany is not present, all the areas where mahogany is usually seen will express as an orange/peach/golden tone that is several shades darker than the hackle/saddle shades. In the female, when we add S to replace s^+ , the hackle is changed to a creamy white shade while the rest of the bird remains very similar to the red duckwing hen. The major factor that will be visually different is that the back will be a cooler shade with a gray/gold tone rather than the more warm brown of the red duckwing hen. This hen is the “golden”/“golden duckwing” standard type hen as found in the standard description for that variety, such as in Modern Game. If the hen is expressing mahogany, it will be visible on the head, around the hackle and will darken the back and breast to a more reddish tone. This phenotype, in both males and females can easily be confused with both Diluted and Cream forms of red duckwing.

So how then do we get to a clean silver duckwing phenotype? The key is to remove (or inhibit) the Autosomal pheomelanin. In my earliest research with Autosomal pheomelanin, I believed that we had a simple pair of alleles at one locus and I called those Ap and ap^+ (the + being applied to the absence of Autosomal pheomelanin as I felt it also derives from a wild source – the gray jungle fowl, just as the yellow skin gene in domestic fowl has been shown to derive). However, subsequent research and test matings have shown that these two factors are not alleles of one locus. They are in fact two separate factors and are non-allelic. As I described in the April 2011 Exhibition Poultry article, I now use the abbreviation Aph for Autosomal pheomelanin. In addition, since

Image 1

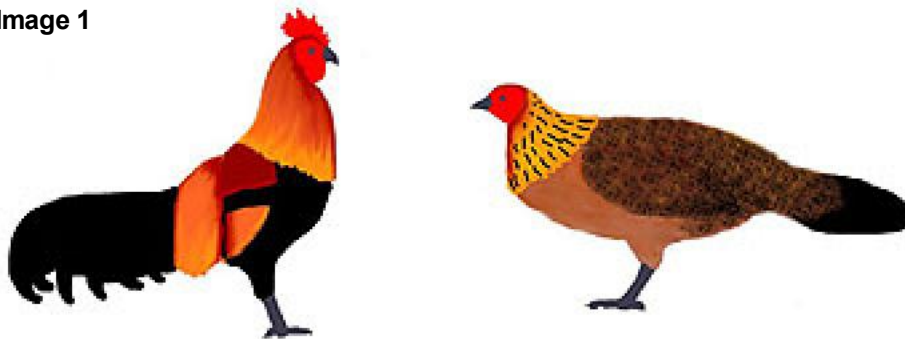


Image 2

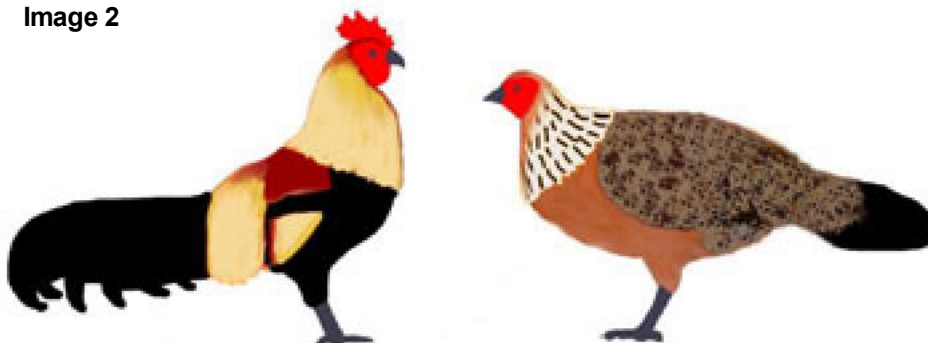


Image 3

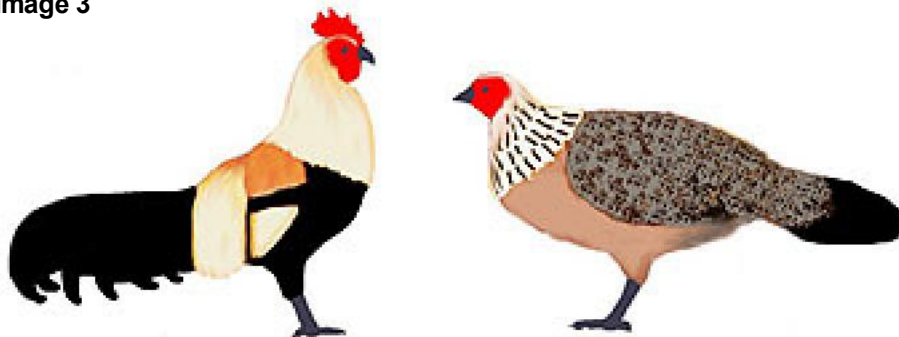
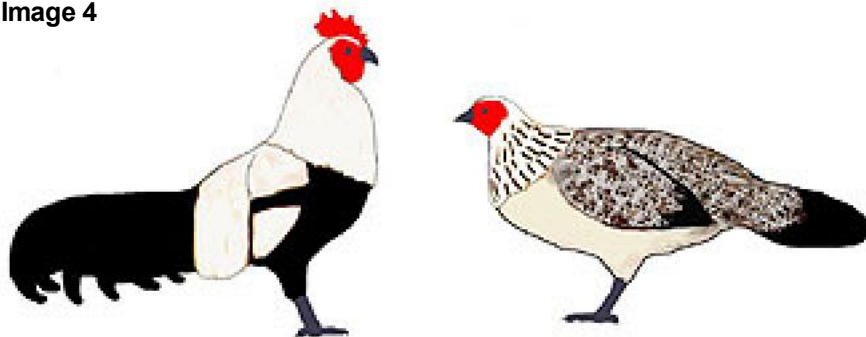


Image 4



the inhibitor of Autosomal pheomelanin is not an allele of Aph, I am now using the abbreviation IAph (Inhibitor of Autosomal Pheomelanin).

So once we have replaced red (s+) with Silver (S) we find that we still do not have a true silver duckwing, so we add IAph to

inhibit the Autosomal pheomelanin. With only one dose of IAph (image 3), we see only partial inhibition of Autosomal pheomelanin. The heterozygotes for IAph will be lighter than the pair described above, showing a creamy, yellow/white tone in the sex-linked pheomelanin areas. In the female, the breast will show some

spottiness, often with each breast feather showing a very pale pheomelanin edge. One of the most interesting aspects of IAph is that since mahogany only expresses on Aph, when IAph is present, the expression of mahogany is also suppressed. Thus, in cases where there is one dose of IAph, even when there is homozygosity for mahogany, very little expression of mahogany will be seen in the phenotype. The most prominent expression of mahogany will be on the male shoulder/back and the female shoulder/back and breast. However, when even one dose of IAph is present, the mahogany expression will never be solid, and will only be spotty showing several shades of orange/red/mahogany. Two doses of IAph will nearly completely suppress the mahogany, so that only a tiny amount is seen at the edge of the shoulder/back area of the male. (I suspect there may be at least two alleles of IAph, as there is some evidence that a second form allows expression of mahogany in females, but suppresses it in males. Certain lines of gray Dorking in England seem to attest to this, but I have never had any examples to test mate or observe).

In instances where there is one dose of IAph, but no mahogany, we see the phenotype in the male that is called "golden"/"golden duckwing", as in the standard description of the Modern Game variety. The standard description calls for this phenotype of male, but the female called for in that standard form is the non-mahogany form described above in the previous section. The male of this type has a yellow/cream hackle, saddle and wing triangle while the shoulder is a darker yellow-gold to pale orange-yellow. Ironically, it is the female of this type, a heterozygote, that is the standard "silver"/"silver duckwing" hen. She has a gray back with a slight cream tint (silver pheomelanin with black/eumelanin stippling of any size appears visually gray and layered over a small amount of Aph, there is a creamy effect), the hackle pheomelanin is white/near white and the breast is salmon, generally with a paler lace of cream pheomelanin at the edge of the breast feathers.

The true, fully silver phenotype (image 4) is very rare, because the female is not a recognized variety of any kind and most people, upon seeing one for the first time, think she is some type of Columbian or Ginger heterozygote. These hens are rather startling if you have never seen one, as the breast is extremely pale, almost completely silver, with almost no salmon expression at all. She also has no warm tones at all in any area of her feathering. When these hens do turn up in most breeding programs, they tend to be

culled out as they are generally undescribed and non-standard. Of course, the few people in the know make full use of these hens and they produce the cleanest white, Silver males. Silver/Silver duckwing has always been a double-mated variety, however, few breeders have ever known that and cull out the proper females. This knowledge has long been a carefully guarded "trade secret". The ironic thing is that breeders of Silver varieties are constantly complaining about "brassy" silver males, yet they routinely cull out the females that could produce the proper males. The true Silver phenotype is homozygous for I^{Aph}. The female is as described above and the male is simply a black and stark white combination, with all the pheomelanin areas, both Autosomal and sex-linked, reduced to white. In many instances, these males show a small amount of white at the upper breast and may show a few spots of white in the lower breast.

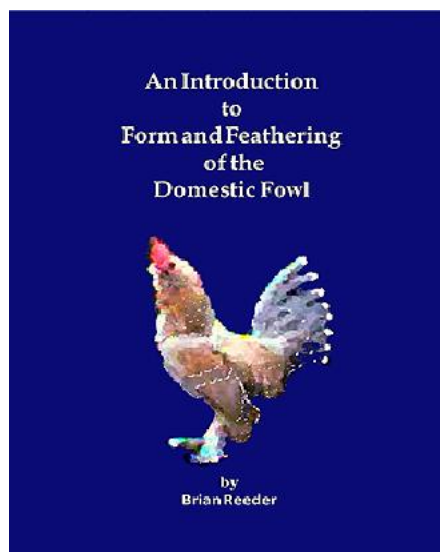
In addition to the presence of S, I^{Aph} and mh⁺, most silver varieties I have test mated also carry dilute (Di) and/or cream (ig). I am not sure that either of these genes is actually necessary to get clean silver, but they certainly don't hurt, either. Any diluter gene is only going to help remove brassiness from the silver areas. The presence of these diluters should come as no surprise. These varieties were developed long before genetic knowledge, so it only makes sense from a visual perspective that those breeders would have used any pale pheomelanin birds in their efforts to breed silver, just as any diluters and whitening genes were used in the development of solid white birds (which are known to often carry many dilution factors in addition to the major whitening gene; recessive

(c) or dominant (I)).

As you can see from this discussion, the Silver varieties are much more complicated than the simple addition of the sex-linked pheomelanin allele Silver (S) to a given red variety. This discussion applies to any silver form of any variety. That means that all silver varieties, if they are clean, true white-silver combine homozygous Silver, homozy-

gous Inhibitor of Autosomal pheomelanin and homozygosity for the absence of mahogany and may often also incorporate Dilute and/or cream, in addition to the other genes required to make the given variety. For those comfortable with using gene abbreviations, the genes of silver are S/S (S/~ in females), I^{Aph}/I^{Aph}, mh⁺/mh⁺ and often Di/- and/or ig/ig.

Congratulations to Mike Geis and Jan Burke-Geis, McCloud, Oklahoma, for back to back Show Grand Champions at both the 2014 ABA National (large fowl white Plymouth Rock) and the 2014 APA National (large fowl black Ameraucana cockerel)!



Introducing Brian Reeder's *latest book . . .*

An Introduction to Form and Feathering of the Domestic Fowl

This book is available **NOW** at **Amazon.com & Authorhouse.com**

Amazon: <http://www.authorhouse.com/Bookstore/BookDetail.aspx?BookId=SKU-000450530>

Author House: http://www.amazon.com/Introduction-Form-Feathering-Domestic-Fowl/dp/1456747843/ref=sr_1_11?ie=UTF8&qid=1305509150&sr=8-11

Order your copy online today.

See Brian Reeder's new blog at:

<http://www.brianreederbreeder.blogspot.com>

Pelican State Classic

North Louisiana Poultry Club

Haynesville, Louisiana

Nov 15, 2014

By John Ackel

The 27th Annual North Louisiana Poultry Club show held on November 15th was very special this year. We honored a greta poultry man and all around person, Jerry McCarty.

Jerry was president of the North Louisiana Poultry Club from 1987-2013 and he is an artist when it comes to the exhibition of poultry. He holds ABA Lifetime Achievement Award, 2003 APA Hall Of Famer, ABA & APA Master Exhibitor and Breeder of Black Old English, Dark Cornish, White Plymouth Rocks, and White Wyandottes. He has been an ABA and APA judge since 1989. Thank you Jerry for your onctinuintg service.

We had a great show in Haynesville this year. Our judges were Dwayne Ballard and Patrick Malone. Leiws Hinkle did the showmanship for our Juniors and did a fabulous job with them. We had 62 exhibitors and 711 birds enetered. The food was by Too Tall BBQ. He did a great job. Jim Crain and Roger West did a jam up job on setting up for this. Great food, fun, and fellowship, and we are really looking forward to next year.

The 2015 show may be on a different date rather than the third Saturday in November due to conflicts with government elctions in the barn. Please watch our 2015 Annoncemnet Ad.

Show Results by Jim Crain

Photos by Ann Charles

LARGE FOWL

CHAMPION AMERICAN -Wyandotte, white, K, Dodge Cowart. RES CHAMP -RIR, C, J&T Farm.

CHAMPION ASIATIC - Langshan, black, K, Dodge Cowart. RES CHAMP -Cochin, black, H, Nicolas Garon.

CHAMPION ENGLISH -none

CHAMPION MEDITERRANEAN- Lt Brn Leghorn, P, Jacob Bates. RES CHAMP- Lt Brn Leghorn, P, Jacob Bates.

CHAMPION CONTINENTAL - Maran, white, P, Ernie Haire. RES CHAMP -Maran, Black Copper, H, Ernie Haire.

CHAMPION AOSB- Cubalaya, BB Red, K, Jacob Bates. RES. CHAMP - Araucana, Black, K, Ann Charles.

BANTAMS

CHAMPION MODERN -Birchen, P, K & D Bantams. RES CHAMP -Black, P, Roger West.

CHAMPION OEG -Black, P, Jim Crain. RES CHAMP - BB Red, P, Jerry & Joyce Tanner.

CHAMPION SCCL-Dutch, Lt. Brn., C, Johnny Sprouse. RES CHAMP-Ply Rock, White, K, Jerry McCarty.

CHAMPION RCCL-Wyandotte, white, H, Dodge Cowart. RES CHAMP -Wyandotte, white, P, Jerry McCarty.

CHAMPION AOCCL - Cornish, Dark, P, Jerry McCarty. RES CHAMP-Cornish, Dark, H, Jerry McCarty.

CHAMPION FEATHER LEG -Cochin, Black, P, Jason Mayeaux. RES CHAMP-d'Uccle, Millie Fleur, Jacob Bates.

CHAMPION BTM DUCK-East Indie, Black, K, Jacob Bates. RES CHAMP-Call, Grey, P, Dodge Cowart.

CHAMPION BANTAM -Birchen, P, K & D Bantams. RES CHAMP BANTAM- Wyandotte, white, H, Dodge Cowart.

CHAMPION LARGE FOWL-Lt Brn Leghorn, P, Jacob Bates. RES CHAMP LARGE FOWL-Maran, white, P, Ernie Haire

CHAMPION WATERFOWL- East Indie, Black, K, Jacob Bates. RES CHAMP WATERFOWL-Call, Grey, P, Dodge Cowart

OPEN SUPER GRAND CHAMPION OF SHOW - Birchen, P, K & D Bantams. RES. SUPER GRAND CHAMPION OF SHOW- Lt Brn Leghorn, P, Jacob Bates.

JUNIORS

JR CHAMP LARGE FOWL -Langshan, black, K, Dodge Cowart. JR RES CHAMP LARGE FOWL-Wyandotte, White, H, Dodge Cowart.

JR CHAMP BANTAM- Wyandotte, white, H, Dodge Cowart. JR RES CHAMP BANTAM-Old English, Crele, K, Cody Hannah.



CHAMPION WATERFOWL- East Indie, Black, K, exhibited by Jacob Bates.



Pelican State Classic
Champion Old English Game
- Black Pullet -

Jim Crain, Louisiana



OPEN SUPER GRAND CHAMPION OF SHOW- Birchen Modern pullet exhibited by K & D Bantams.



Champion SCCL - Dutch, Lt. Brn.cockerel exhibited by Johnny Sprouse.



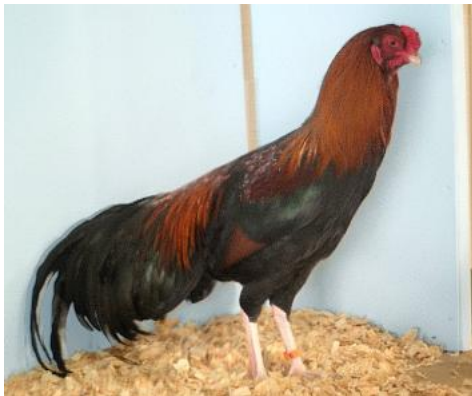
CHAMPION LARGE FOWL - Light brown Leghorn hen exhibited by Jacob Bates.



CHAMPION FEATHER LEG - Black Cochin pullet exhibited by Jason Mayeaux.



JR CHAMP LARGE FOWL - Black Langshan, cockerel exhibited by Dodge Cowart.



CHAMPION AOSB - BB Red Cubalya Cockerel exhibited by Jacob Bates.



CHAMPION OEG - Black pullet exhibited by Jim Crain.



CHAMPION RCCL - White Wyandotte, hen exhibited by Dodge Cowart.



CHAMPION AOCCL - Dark Cornish pullet exhibited by Jerry McCarty.





*Merry Christmas
and Happy New Year!*

*From all of us at
Exhibition Poultry Magazine*

☐

Check box above for this size ad.

1 column by 3
inches. No extra
charge for small
color picture.

Price: **\$20**

☐

Check box above for this size ad.

1 column by 2".
No picture... just
\$12.50

☐

Check box above for this size ad.

1 column by 4
inches. No extra
charge for color
picture.

Price: **\$25**

☐

Check box for this size ad.

This is 2 columns by 4 inches. There are no extra charges for a color picture. Win ads, poultry for sale, upcoming shows, breed clubs, and all commercial advertising is welcomed. This size ad with a color picture is just **\$50** for one run.

Special One-Year Packages: Any ad run for a full year, with only minor text changes throughout the year, PRE-PAID in full, is 50% off the single insertion rate. Example: An ad this size, run for one year (12 issues) is only \$300 (*1/2 the regular price*). And NO extra charge for color!

Special 3 month Packages: Any ad run for 3 months, with only minor text changes throughout that time, PRE-PAID in full, is **25% off** the single insertion rate. Example: A 2 column by 4 inch ad package run for **3 issues** (see ad size above) is just **\$112** if pre-paid. (a \$38 savings). This is ideal for clubs advertising their shows.

Print your ad copy below: (or email: contact@SkyBlueEgg.com)

Show Name: _____

Make checks payable to: **Exhibition Poultry Magazine®**

Mail to: E. P., Ann Charles, P. O. Box 1027, Winnfield, LA 71483

Clearly print your email address below if you want a proof of your ad:

Your Email: _____

email: contact@skyblueegg.com